




## CUUX063X06Fxyz0

TRI BAND | HEX PORT | PANEL ANTENNA | XXX-POL | 65° / 65° / 65° | 11.0 / 14.0 / 14.0 DBI | FIXED TILT

- Tri band, fixed tilt panel antenna, 6 connectors
- Ultra-wide band performance
- Ideal solution for Small Cell applications

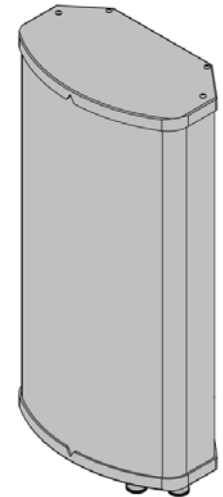
### Connector Description

The antenna has 6 connectors located at the bottom, each marked with a colored ring.

|              |               |              |   |   |
|--------------|---------------|--------------|---|---|
| Low Band     | 696-960 MHz   | Red Rings    |  | (2x) 4.1/9.5 or 4.3/10 or 7/16-DIN Female |
| High Band #1 | 1695-2700 MHz | Yellow Rings |  | (2x) 4.1/9.5 or 4.3/10 or 7/16-DIN Female |
| High Band #2 | 1695-2700 MHz | Orange Rings |  | (2x) 4.1/9.5 or 4.3/10 or 7/16-DIN Female |

### Electrical Characteristics

| Electrical Characteristics | Low Band                         |          | High Band #1 and #2 |           |           |           |
|----------------------------|----------------------------------|----------|---------------------|-----------|-----------|-----------|
|                            | 696-960 MHz                      |          | (2x) 1695-2700 MHz  |           |           |           |
| Frequency Bands (MHz)      | 696-806                          | 806-960  | 1695-1880           | 1850-1990 | 1920-2200 | 2300-2700 |
| Polarization               | ±45°                             |          | (2x) ±45°           |           |           |           |
| Horizontal Beamwidth       | 75°                              | 70°      | 65°                 | 70°       | 75°       | 75°       |
| Vertical Beamwidth         | 42°                              | 40°      | 18°                 | 16°       | 14°       | 14°       |
| Gain                       | 10.5 dBi                         | 11.0 dBi | 13.5 dBi            | 14.0 dBi  | 14.0 dBi  | 14.0 dBi  |
| Electrical Downtilt (°)    | (x) 0, 2, 5, 10                  |          | (y) 0, 2, 4, 6, 10  |           |           |           |
| Impedance                  | 50Ω                              |          | 50Ω                 |           |           |           |
| VSWR                       | ≤ 1.5:1                          |          | ≤ 1.5:1             |           |           |           |
| Front-to-Back Ratio        | > 20 dB                          |          | > 25 dB             |           |           |           |
| IntraBand Isolation        | 20 dB                            |          | 20 dB               |           |           |           |
| InterBand Isolation        | 25 dB                            |          | 25 dB               |           |           |           |
| IM3 (2x20W carrier)        | < -153 dBc                       |          | < -153 dBc          |           |           |           |
| Input Power                | (2x) 500 W                       |          | (4x) 300 W          |           |           |           |
| Diplexed                   | No                               |          |                     |           |           |           |
| Lightning Protection       | Direct Ground                    |          |                     |           |           |           |
| Operating Temperature      | -40° to +60° C (-40° to +140° F) |          |                     |           |           |           |



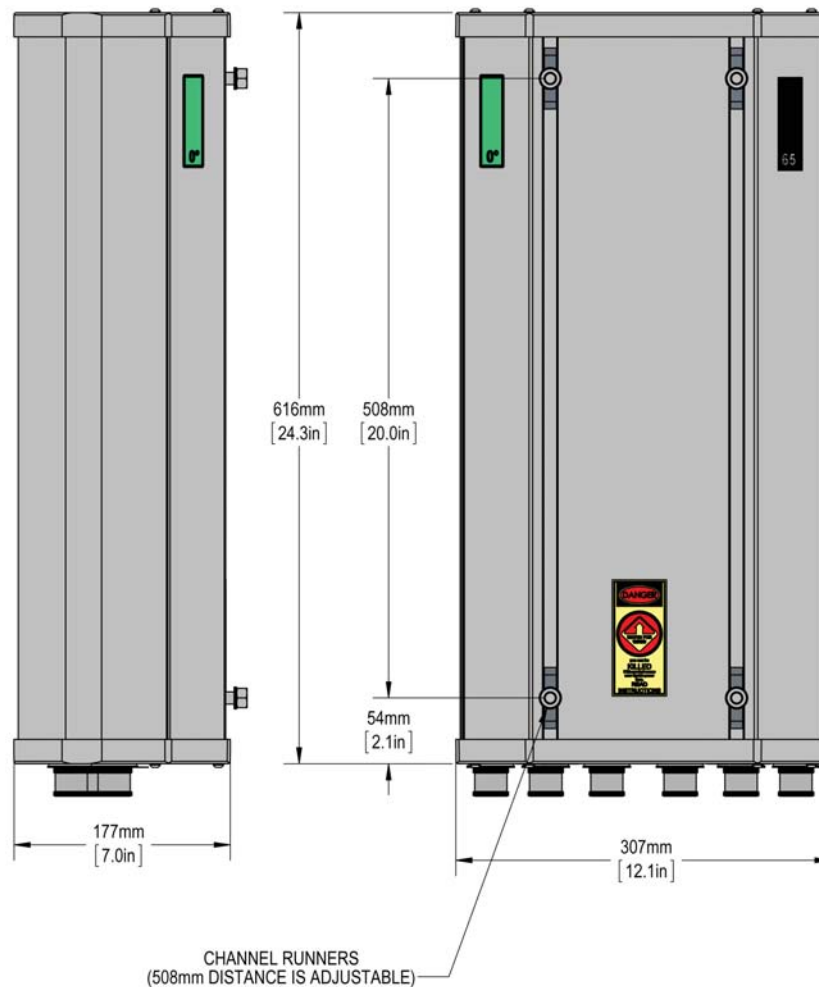
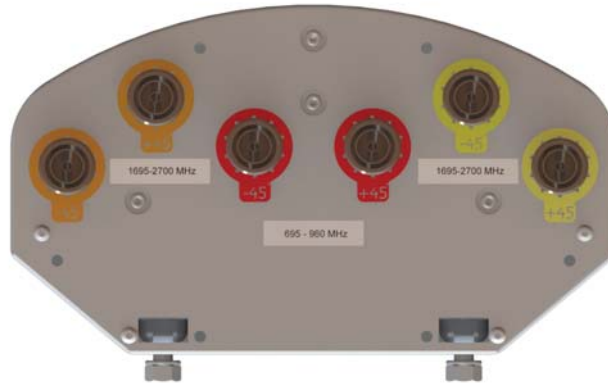
### Mechanical Characteristics

| Dimensions (Height x Width x Diameter) |       | 616 x 307 x 177 mm  | 24.3 x 12.1 x 7.0 in |
|--|-------|---------------------|----------------------|
| Weight without Mounting Brackets       |       | 5.9 kg              | 13 lbs               |
| Survival Wind Speed                    |       | 241 km/hr           | 150 mph              |
| Wind Area                              | Front | 0.18 m <sup>2</sup> | 1.9 ft <sup>2</sup>  |
|  | Side  | 0.11 m <sup>2</sup> | 1.1 ft <sup>2</sup>  |
| Wind Load                              | Front | 219 N               | 49 lbf               |
|  | Side  | 129 N               | 29 lbf               |

Quoted performance parameters are provided to offer typical, peak or range values only and may vary as a result of normal testing, manufacturing and operational conditions. Extreme operational conditions and/or stress on structural supports is beyond our control. Such conditions may result in damage to this product. Improvements to products may be made without notice.

CUUX063X06Fxyz0

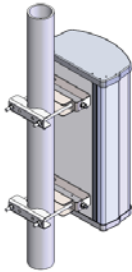
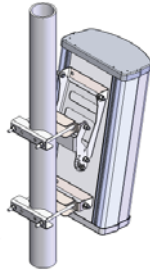

TRI BAND | HEX PORT | PANEL ANTENNA | XXX-POL | 65° / 65° / 65° | 11.0 / 14.0 / 14.0 DBI | FIXED TILT




Quoted performance parameters are provided to offer typical, peak or range values only and may vary as a result of normal testing, manufacturing and operational conditions. Extreme operational conditions and/or stress on structural supports is beyond our control. Such conditions may result in damage to this product. Improvements to products may be made without notice.

## CUUX063X06Fxyz0

TRI BAND | HEX PORT | PANEL ANTENNA | XXX-POL | 65° / 65° / 65° | 11.0 / 14.0 / 14.0 DBI | FIXED TILT

| Mounting Options  | Part Number | Image   | Fits Pipe Diameter   | Weight         |
|---|-------------|---|----------------------|----------------|
| 2-Point Pole Mounting Bracket Kit<br><i>(Included with CUUX063X06Fxyz0-P)</i>   | MKS09P01    |    | 50-115 mm 2.0-4.5 in | 2.9 kg 6 lbs   |
| 2-Point Pole Mounting & Downtilt Bracket Kit<br><i>(Included with CUUX063X06Fxyz0-T)</i>  | MKS09T01    |    | 50-115 mm 2.0-4.5 in | 4.5 kg 10 lbs  |
| Continuous Adjustment "Stadium" Mounting Bracket Kit - Wall or Pole Mount<br><i>(Included with CUUX063X06Fxyz0-S)</i><br><br><i>Allows continuous adjustment of the azimuth and elevation; Straps for Pole Mounting are NOT included.</i> | 11100010    |  | 50-203 mm 2.0-8.0 in | 2.4 kg 5.4 lbs |



The antenna shown in the images at left does not represent the CUUX063X06Fxyz0. These are generic images used to illustrate the bracket kit.

Quoted performance parameters are provided to offer typical, peak or range values only and may vary as a result of normal testing, manufacturing and operational conditions. Extreme operational conditions and/or stress on structural supports is beyond our control. Such conditions may result in damage to this product. Improvements to products may be made without notice.

## CUUX063X06Fxyz0

TRI BAND | HEX PORT | PANEL ANTENNA | XXX-POL | 65° / 65° / 65° | 11.0 / 14.0 / 14.0 DBI | FIXED TILT

### Ordering Options

When ordering, select the Electrical Downtilt (**xy**), the Connector Type (**z**) and the Mounting Option.

|                                |           |  |                  |
|--------------------------------|-----------|--|------------------|
| Electrical Downtilt Degree (°) | Low Band  | replace "x" with one of the following options: | 0, 2, 5 or 10    |
|                                | High Band | replace "y" with one of the following options: | 0, 2, 4, 6 or 10 |

| Mounting Option                                      |          | Connector Type (z)             |                                |                                |
|--|----------|--------------------------------|--------------------------------|--------------------------------|
|  |          | 4.1/9.5 Female Mini-DIN        | 4.3/10 Female                  | 7/16-DIN Female                |
| No Mounting - Antenna Only                           | ---      | CUUX063X06F <sub>xym</sub> 0   | CUUX063X06F <sub>xys</sub> 0   | CUUX063X06F <sub>xyD</sub> 0   |
| 2-Point Pole Mounting Bracket Kit                    | MKS09P01 | CUUX063X06F <sub>xym</sub> 0-P | CUUX063X06F <sub>xys</sub> 0-P | CUUX063X06F <sub>xyD</sub> 0-P |
| 2-Point Pole Mounting & Downtilt Bracket Kit         | MKS09T01 | CUUX063X06F <sub>xym</sub> 0-T | CUUX063X06F <sub>xys</sub> 0-T | CUUX063X06F <sub>xyD</sub> 0-T |
| Continuous Adjustment "Stadium" Mounting Bracket Kit | 11100010 | CUUX063X06F <sub>xym</sub> 0-S | CUUX063X06F <sub>xys</sub> 0-S | CUUX063X06F <sub>xyD</sub> 0-S |

Quoted performance parameters are provided to offer typical, peak or range values only and may vary as a result of normal testing, manufacturing and operational conditions. Extreme operational conditions and/or stress on structural supports is beyond our control. Such conditions may result in damage to this product. Improvements to products may be made without notice.