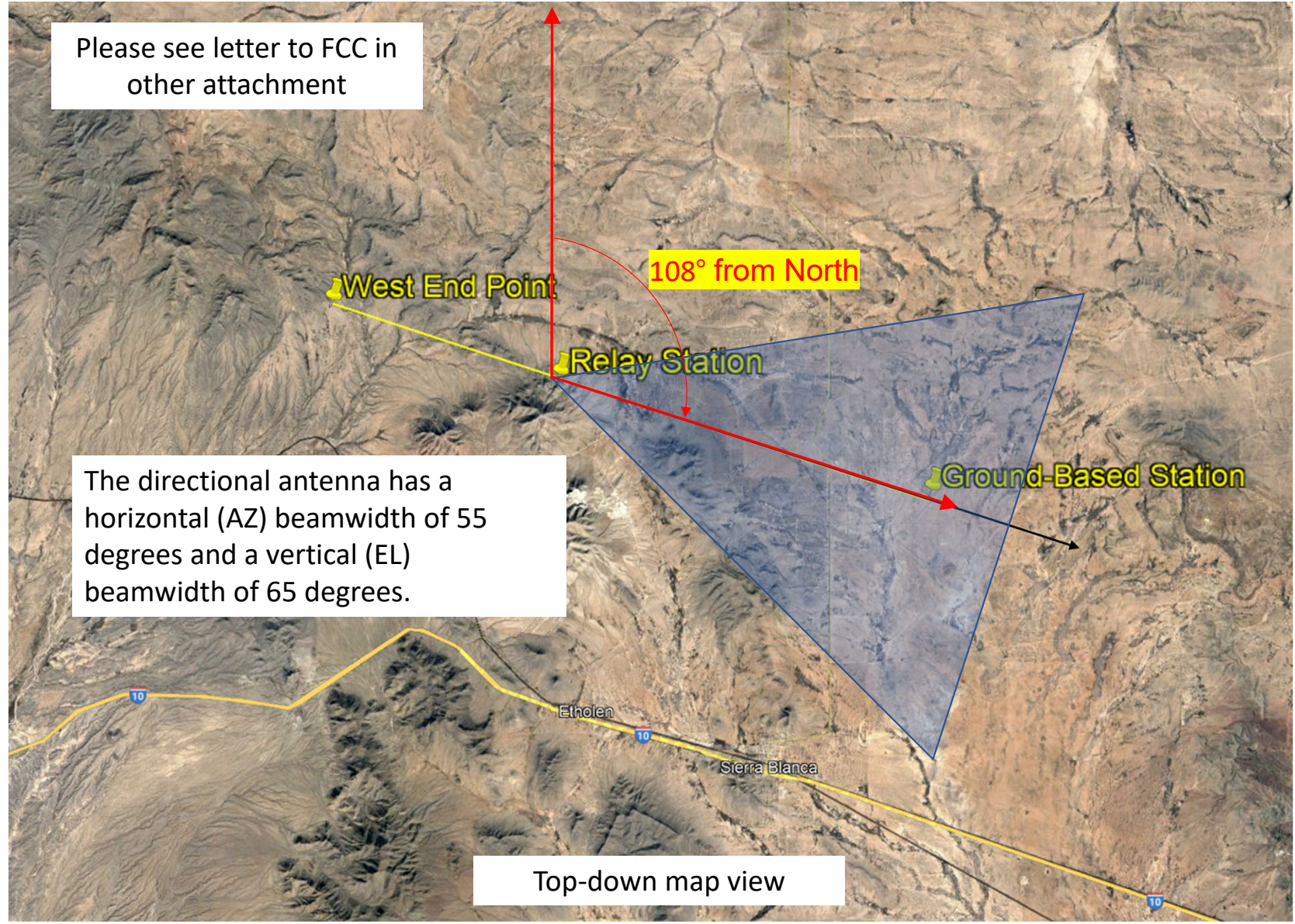
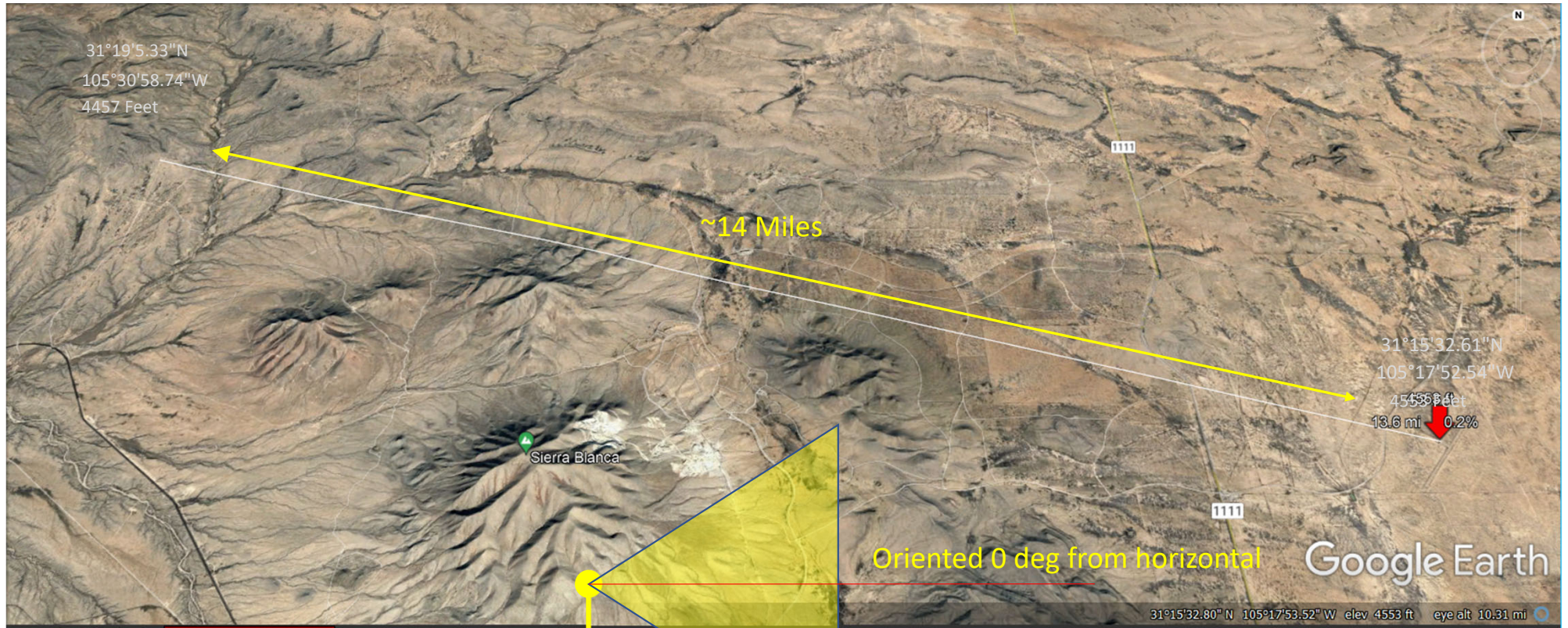


Please see letter to FCC in other attachment



The directional antenna has a horizontal (AZ) beamwidth of 55 degrees and a vertical (EL) beamwidth of 65 degrees.

Top-down map view



Features:

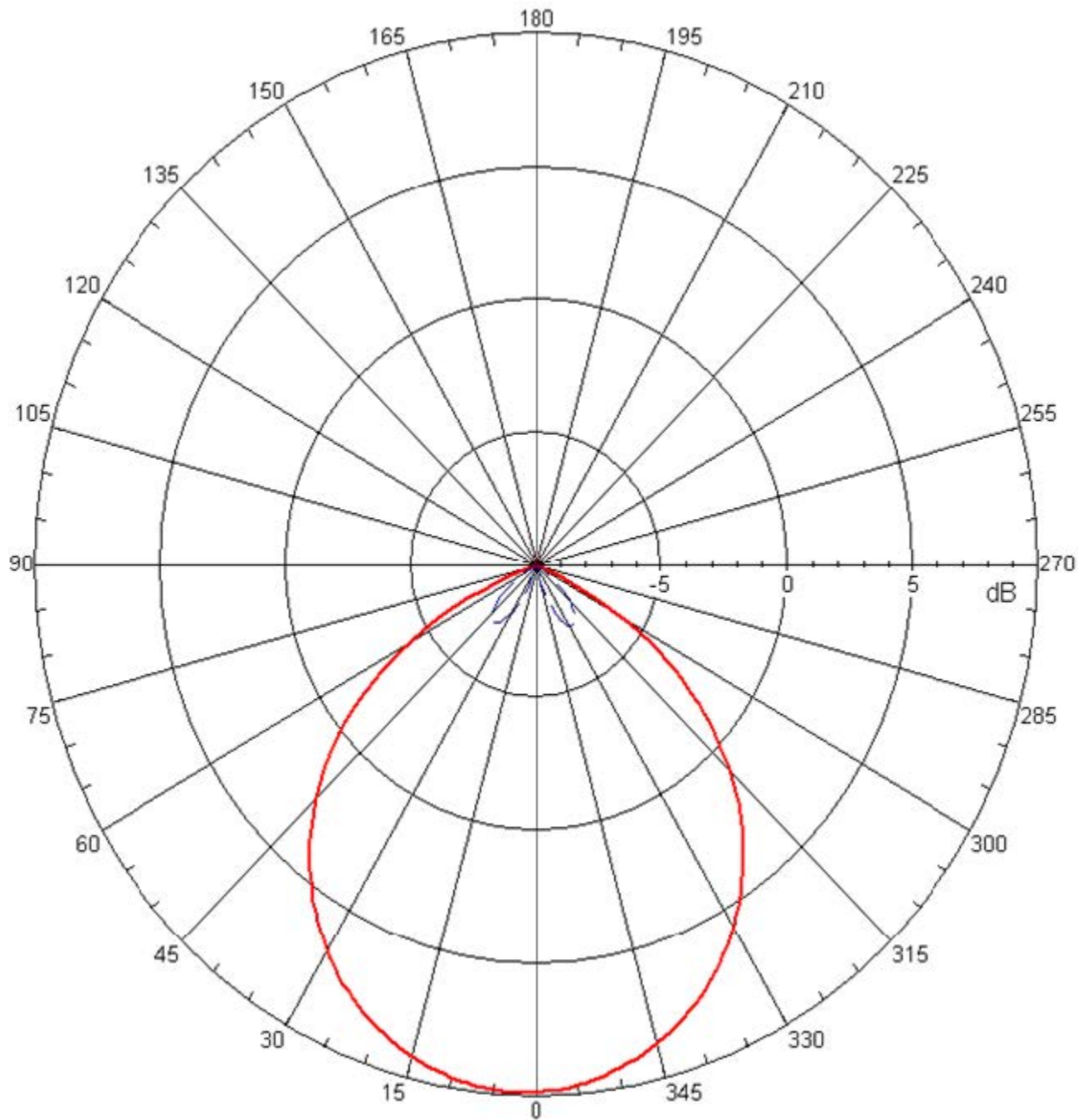
- Broad Band Coverage
- 1.7 - 2.5 GHz
- 9 dBi
- White Polycarbonate Radome
- Designed for L&S Band communication in the following markets:
 - Law Enforcement
 - Surveillance
 - UAV & UGV Ground Stations



Antenna Specifications

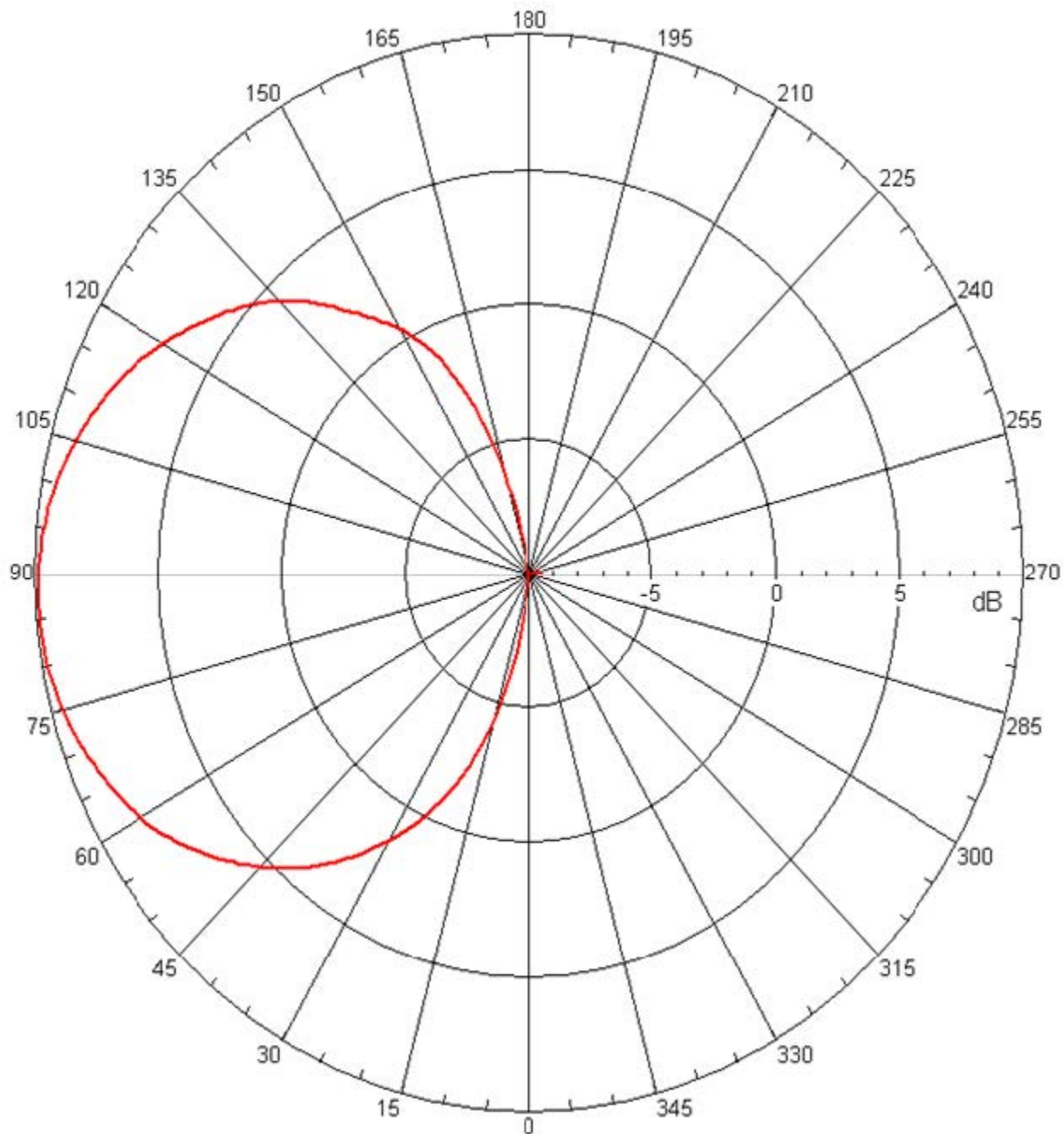
Parameter	Value	Units	Tolerance
Antenna Pattern	Directional Antenna		
Frequency Band	L & S		
Impedance	50	Ohms	
Minimum Frequency	1.7 / 1,700	GHz / MHz	
Maximum Frequency	2.5 / 2,500	GHz / MHz	
Frequency Bandwidth	0.8 / 800	GHz / MHz	
Maximum VSWR	1.5:1		
Maximum Gain	9	dBi	
Polarization	Vertical		
Maximum RF Input Power	100	Watts	
Horizontal (AZ) Beamwidth	55	Degrees	
Vertical (EL) Beamwidth	65	Degrees	

Parameter	Value	Units	Tolerance
Ground Plane Required	No		
Radome Material	Polycarbonate		
Color	White		
Maximum Wind Velocity	62 / 100	mph / kph	
RF Connector Type	SMA(f)		
Product Length	6.19 / 157.23	inches / mm	±.125"
Product Width	4.19 / 106.43	inches / mm	+ .020" / -.000"
Product Height	1.25 / 31.75	inches / mm	±.125"
Product Weight	4.0 / 113.4	oz / grams	



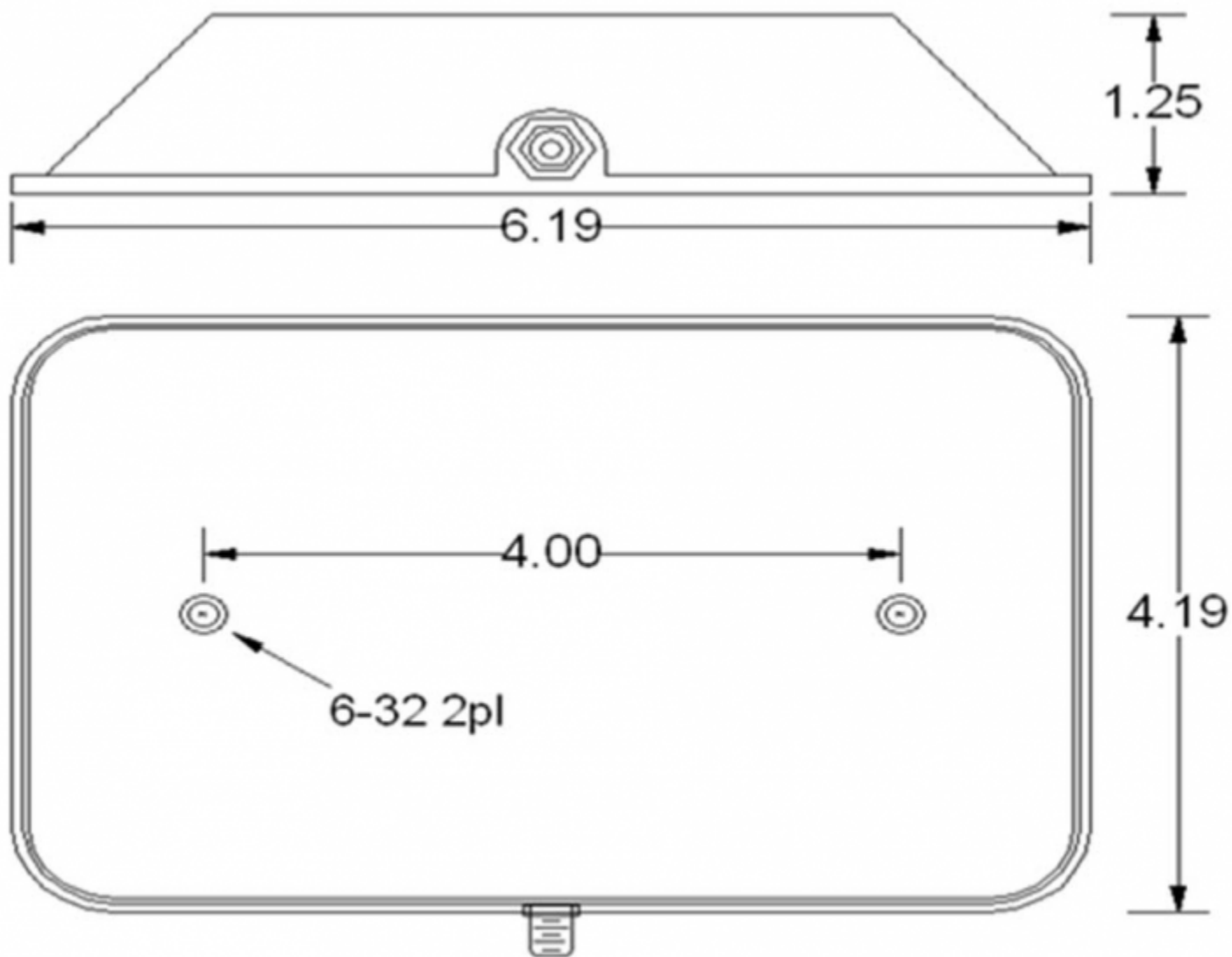
Azimuth Pattern

Referenced to 10 dBi



Elevation Pattern

Referenced to 10 dBi



Engineering Drawing

All dimensions are in inches