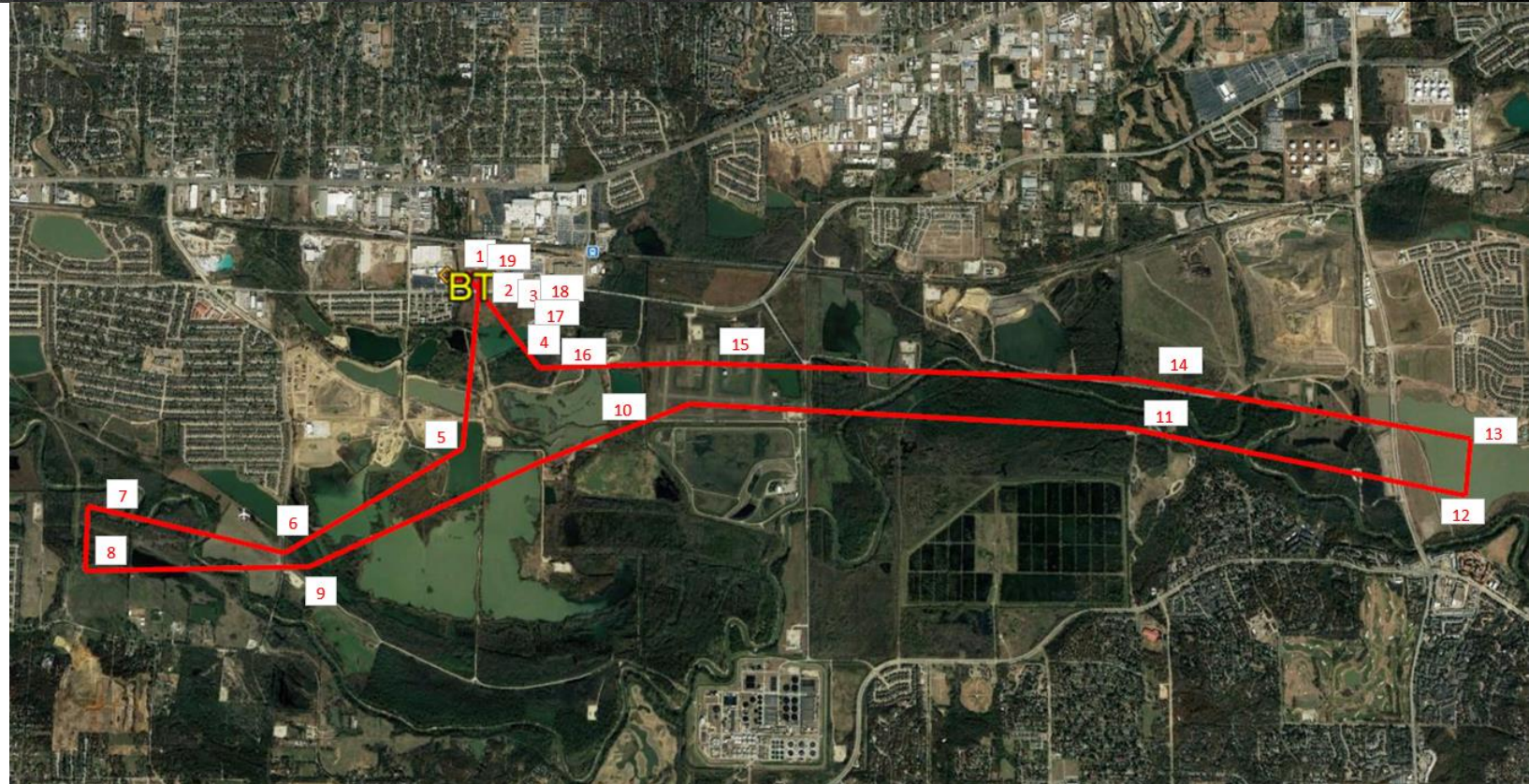


Waypoint and Altitudes

Bell Proposed SIO Flight Path Coordinates v2				
25-Jul-19				
Waypoint #	Description	Altitude (ft AGL)	Lat	Long
1	Launch/Landing	0	32.80316441	-97.1662995
2	Waypoint	500-1000	32.80300201	-97.1640963
3	Waypoint	500-1000	32.80263056	-97.1622103
4	Waypoint	500-1000	32.79794131	-97.1622979
5	Waypoint	500-1000	32.79082072	-97.1643122
6	Waypoint	500-1000	32.78617618	-97.1756387
7	Waypoint	500-1000	32.78866818	-97.1916351
8	Waypoint	500-1000	32.78636658	-97.1920231
9	Waypoint	500-1000	32.78440943	-97.1778926
10	Waypoint	500-1000	32.79513813	-97.1526433
11	Waypoint	500-1000	32.79487129	-97.1128334
12	Waypoint	500-1000	32.79011131	-97.0932978
13	Waypoint	500-1000	32.79217531	-97.0925082
14	Waypoint	500-1000	32.79681756	-97.1131028
15	Waypoint	500-1000	32.79699353	-97.1460875
16	Waypoint	500-1000	32.79687238	-97.1595825
17	Waypoint	500-1000	32.80281027	-97.161857
18	Waypoint	500-1000	32.80319267	-97.1638398
19	Land	0	32.80316441	-97.1662995
Total Distance:				11.90 nmi



Operating Procedure

1. Ground Auto Tracker Antenna setup within radius of operation at indicated base/mobile location on FCC STA application as the Ground Data Terminal.
2. Ground Auto Tracker Antenna manually or automatically switched to Omni antennas during close-up operation.
3. Manned aircraft fly through all waypoints indicated on the flight profile.
Max altitude 1000 ft.
4. Ground Auto Tracker Antenna manually or automatically switched to Directional antenna if necessary during flight.
5. Manned aircraft reached destination and proceed back to home base.
6. Ground Auto Tracker Antenna manually or automatically switched to Omni antennas during close-up operation.
7. Manned Aircraft landed and shutdown.