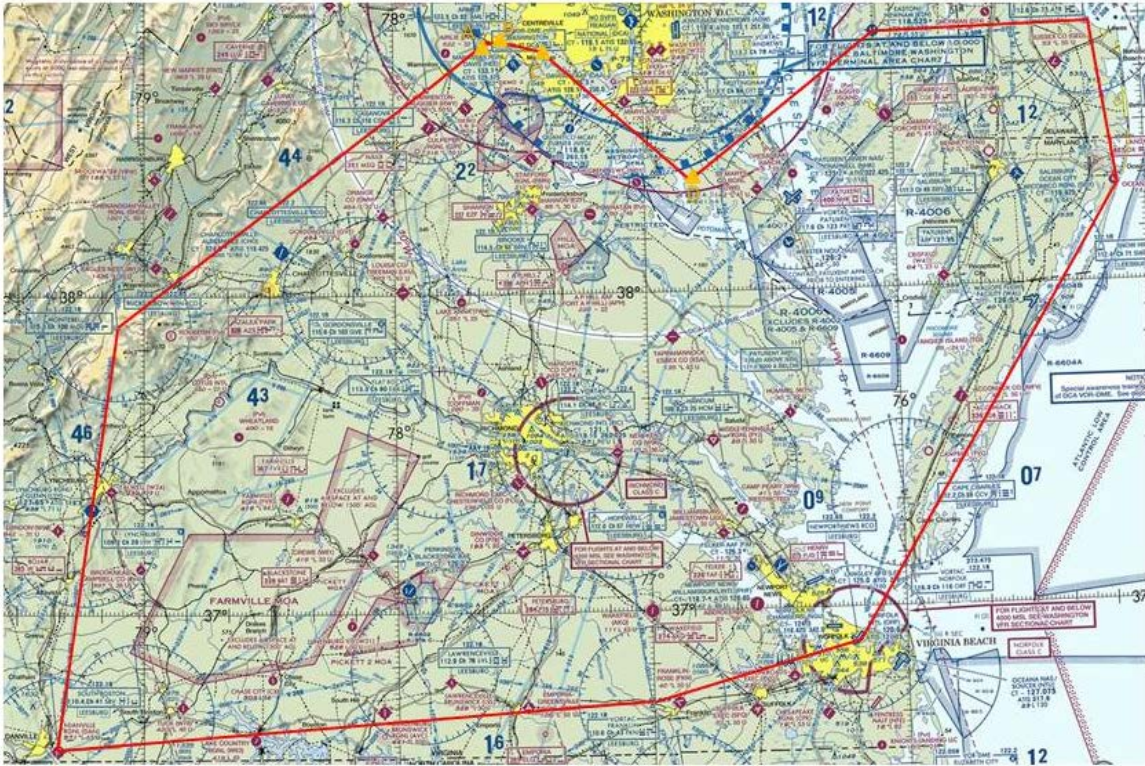


All areas depicted are for airborne systems from surface to 25,000 ft MSL.



**Figure 1: Local, OPA Flight Test Operations Area**

Waypoint	Latitude (deg)	Longitude (deg)	Distance to next point (nm)
A	N 38 47.10	W 77 38.40	2
B	N 38 47.58	W 77 36.24	3
C	N 38 47.70	W 77 32.22	14
D	N 38 35.51	W 77 24.21	64
KESN	N 38 48.25	W 76 04.14	40
ATR	N 38 48.60	W 75 12.70	30
KOXB	N 38 18.63	W 75 07.44	99
ORF	N 36 53.50	W 76 12.02	40
FKN	N 36 42.80	W 77 00.80	112
DAN	N 36 34.10	W 79 20.20	81
MOL	N 37 54.02	W 79 06.41	73
CSN	N 38 38.45	W 77 51.92	14

**Table 1: Local, Flight Test Operations Boundary Coordinates**

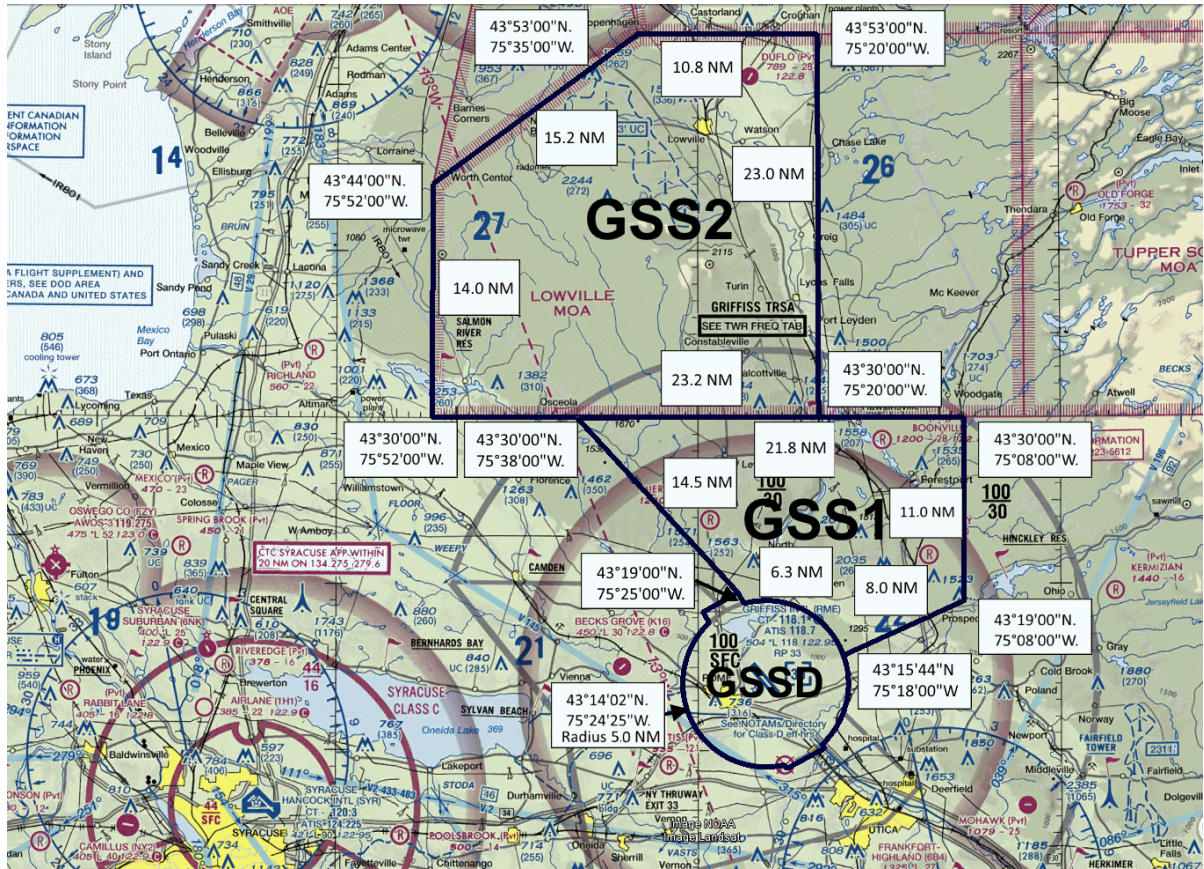


Figure 2: Griffiss, NY, OPA Flight Test Operations Area

Waypoint	Latitude (deg min sec)	Longitude (deg min sec)	Leg Length (nm)
KRME Class D Boundary	-	-	5 (radius)
1	N 43 15 44	W 75 18 00	6.3
2	N 43 19 00	W 75 08 00	8
3	N 43 30 00	W 75 08 00	11
4	N 43 30 00	W 75 20 00	9
5	N 43 53 00	W 75 20 00	23
6	N 43 53 00	W 75 35 00	10.8
7	N 43 44 00	W 75 52 00	15.2
8	N 43 30 00	W 75 52 00	14
9	N 43 30 00	W 75 38 00	10
10	N 43 19 00	W 75 25 00	14.5

Table 2: Griffiss, NY, Flight Test Operations Boundary Coordinates