




REVISION	DESCRIPTION OF CHANGE	
A	Initial Release: 1 January 2015	By: Jan A. King
	Description (Date: xx/xx/xxxx)	By:
		By:
		By:
		By:
		By:
		By:
<p>THE INFORMATION CONTAINED IN THIS DOCUMENT IS THE SOLE PROPERTY OF AQUILA SPACE INC. ANY REPRODUCTION IN PART OR WHOLE WITHOUT THE WRITTEN PERMISSION OF AQUILA SPACE INC. IS PROHIBITED.</p> <p>AQUILA SPACE INC., CONFIDENTIAL AND PROPRIETARY</p>		
 <p>Aquila Space</p>	<p>TITLE:</p> <p>CKAT-10 Ka-Band Antenna Pattern</p>	<p>REV.</p> <p>A</p>
DOCUMENT NUMBER: XXX-XXXX-XXX	AUTHOR: <NAME>	



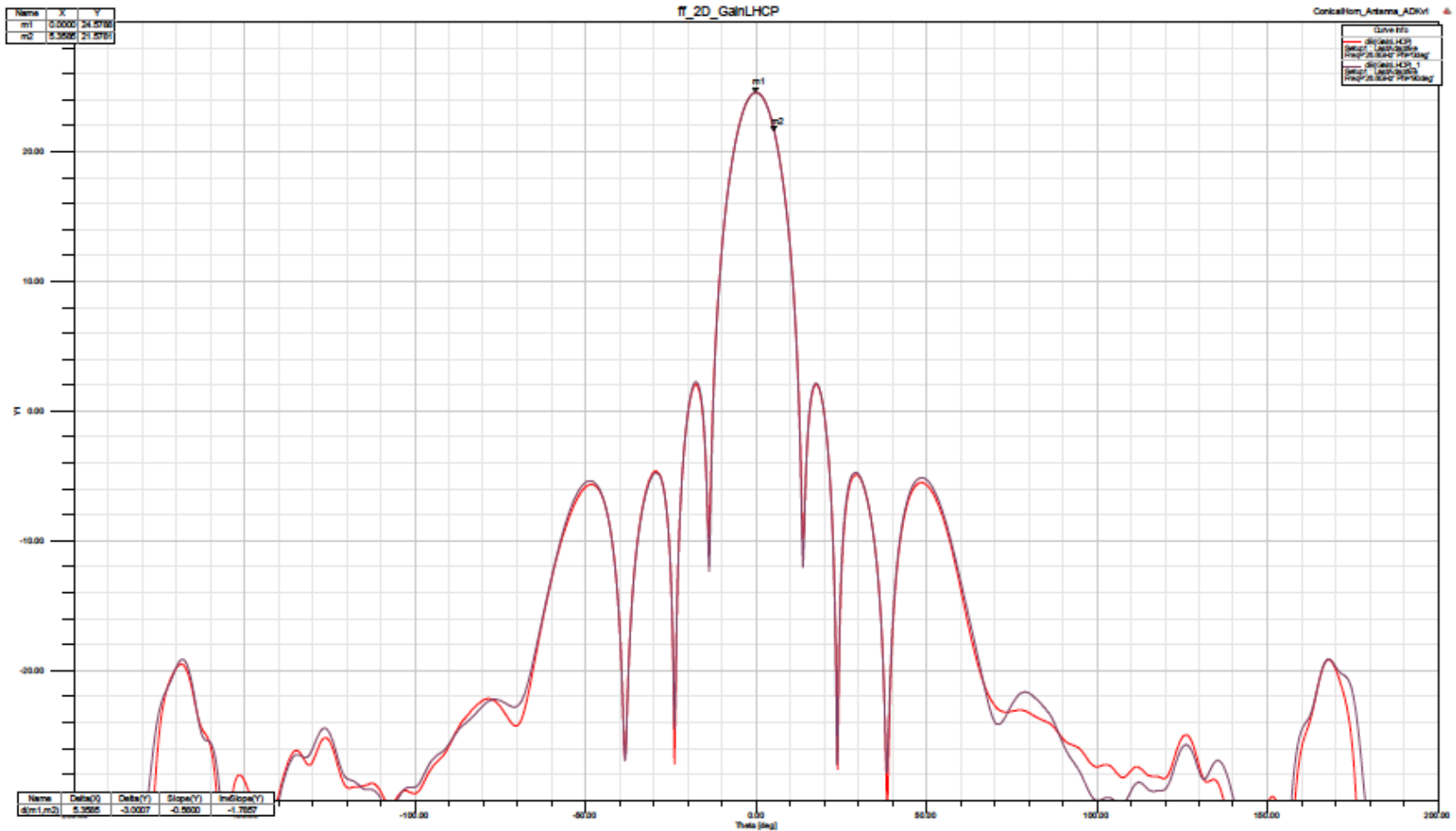
aquila space

OPEN TECHNOLOGY FOR SPACE

**CKAT-10
Ka-Band Antenna Pattern
Predicted and Measured (Co-Pole/Cross-Pole)**

**Jan A. King
1 January 2015**

Ka-Band Horn Predicted Performance



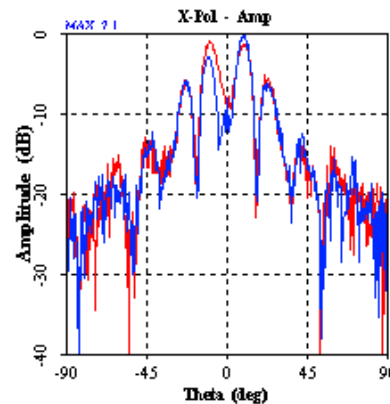
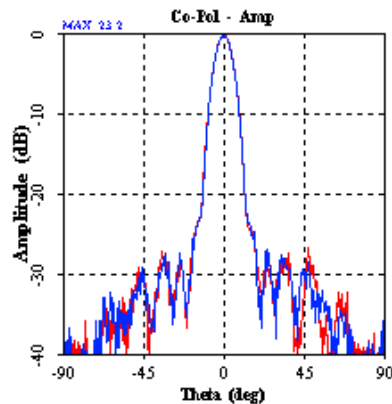
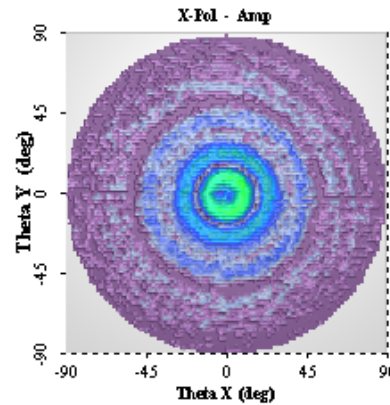
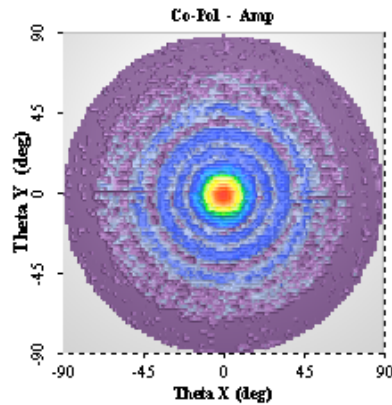
25 dB gains, <-20 dB sidelobes, 10.2 degree beamwidth.

Ka-Band Horn Performance

Measured Data (1 of 6 Flight Units)



SAGE Lens Antenna
RHCP
Far-Field Patterns
Frequency: 26.8000



Frequency: 26.80 GHz

Polarization: RHCP

Directivity: 24.7 dBiC

Gain: 23.3 dBiC

-3 dB Beamwidth: 10.2°

X-Pol. Isolation: -16.1 dB

1st Sidelobe: -26.5 dB