

Proposed Operating Area – Florida

Operating Area.

- (1) How do you ensure that there is no unusual ground activity under the flight operations area? For example, are there any weekend events scheduled? Are there housing areas or public gathering places?

The majority of the overall identified operating area is a sparsely populated area, minimizing the potential for unplanned activities being encountered. As part of the UAV preflight checklist, operational checks of the onboard payload module will be verified. This payload provides real time situational awareness of unusual ground activities occurring in the area. Most operating missions will be relatively short in their travel from the launch point to minimize the potential of encountering unusual ground activity and will be conducted in sparsely populated areas.

- (2) Identify any military or civilian routes through the proposed operational area.

There are no military or civilian routes through our proposed operating area identified on the VFR Sectional.

- (3) Identify the proposed operating area on an aeronautical chart. The proposed area needs to define lateral boundaries and requested altitudes.

The proposed Florida operating area for Nighthawk UAS operations is as follows. The northern border of the proposed operating area is established by a line starting at 30°14'25.00"N 85°31'50.00"W and moving easterly approximately 5.2 nautical miles to 30°14'25.00"N 85°25'50.00"W. From this point the eastern border is established by a southerly line approximately 2.7 nautical miles long to 30°11'45.00"N 85°25'50.00"W. From this point the southern border is established by a westerly line approximately 5.2 nautical miles long ending at 30°11'45.00"N 85°31'50.00"W. From here the western boundary line travels north approximately 2.7 nautical miles to the original starting point, 30°14'25.00"N 85°31'50.00"W. See Figure 1 and Figure 2 below.

Requested operating altitude within the entire operating area would be up to a maximum of 500 feet AGL.



Figure 1. Map of proposed operating area on FAA VFR sectional map.

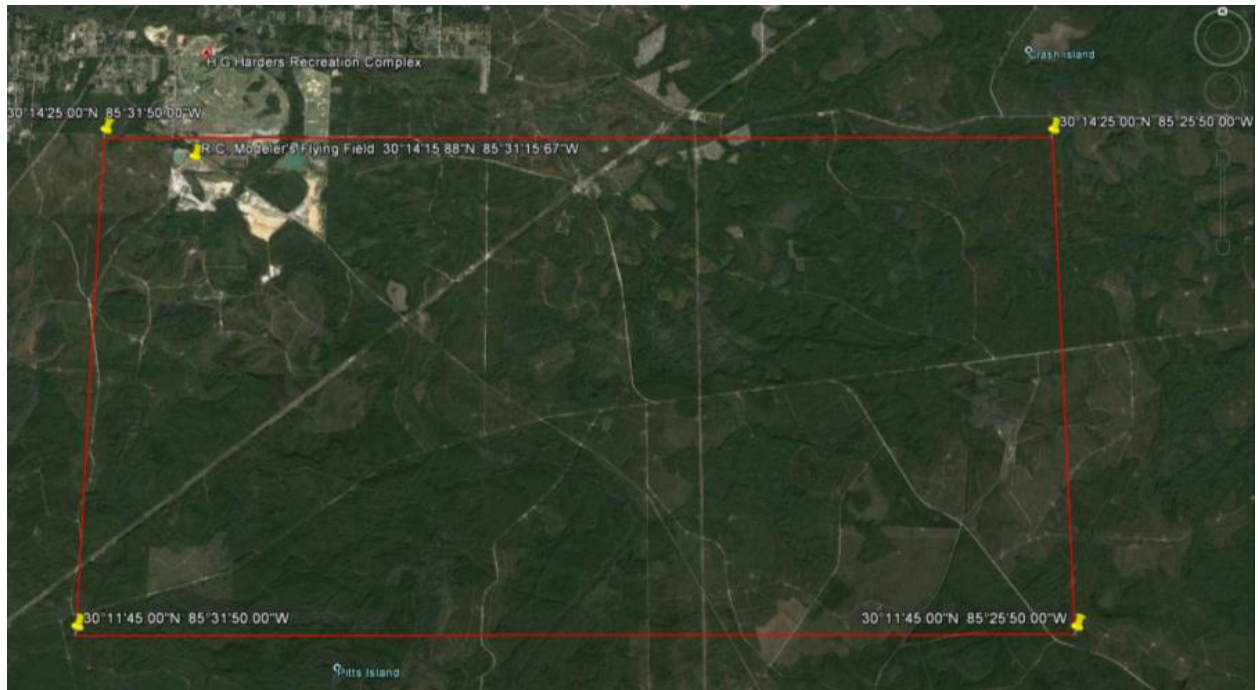


Figure 2. Map of proposed operating area (from GoogleEarth), outlined in red. Primary takeoff and landing point would be from the RC Modeler's Flying Field.