

Applewhite Aero

FCC Locations Description

Table of Contents

1. Test Description.....	2
2. Flight Areas	2
A. Whidbey Island, Washington	2
B. Pendleton, Oregon.....	3

1. Test Description

Small unmanned aerial vehicles (UAV) will be tested, using the radios to communicate with onboard systems. Flights will be conducted up to 5000 ft AGL. Flights will be conducted under FAA visual flight rules (VFR) and line of sight communication and operation will be maintained at all times.

2. Flight Areas

Flights will be conducted at two locations: Whidbey Island, Washington and Pendleton, Oregon. The specific test areas are described below

A. Whidbey Island, Washington

The test area is in restricted airspace, R-6701. Most testing will be conducted in the primary test area, shown in Fig 1. Additional testing may be conducted in the secondary test area, shown in Fig 2. Aircraft will be tested up to 5000 ft AGL.

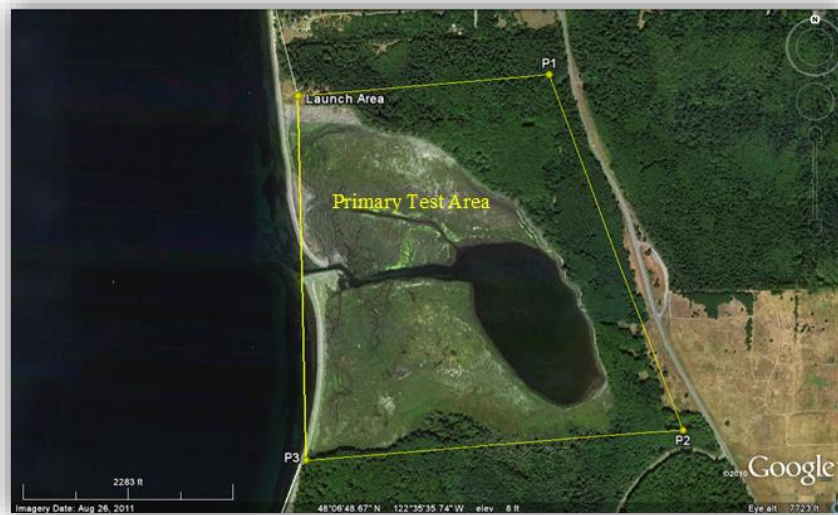


Figure 1: Whidbey Island Primary Test Area

Primary Test Area:

Launch Area: *N48°07.1' W122°35.9'*
Point P1: *N48°07.1' W122°35.2'*
Point P2: *N48°06.5' W122°34.9'*
Point P3: *N48°06.5' W122°35.9'*

Applewhite Aero
FCC Locations Description



Figure 2: Whidbey Island Secondary Test Area

Secondary Test Area:

<i>Point S1:</i>	<i>N48°09.1'</i>	<i>W122°41.1'</i>
<i>Point S2:</i>	<i>N48°09.9'</i>	<i>W122°38.9'</i>
<i>Point S3:</i>	<i>N48°09.2'</i>	<i>W122°36.7'</i>
<i>Launch Area:</i>	<i>N48°07.1'</i>	<i>W122°35.9'</i>
<i>Point P3</i>	<i>N48°06.5'</i>	<i>W122°35.9'</i>
<i>Point S4:</i>	<i>N48°05.9'</i>	<i>W122°36.3'</i>
<i>Point R4:</i>	<i>N48°06.1'</i>	<i>W122°41.3'</i>

B. Pendleton, Oregon

The test area is in class G airspace, 16 miles NNW of Pendleton, Oregon. Testing will be conducted in 2 separate fields, shown in Fig 3 and Fig 4.

Applewhite Aero
FCC Locations Description



Figure 3: North Pendleton location



Figure 4: South Pendleton location