



Applewhite Aero

Location Request

Trinitie Vance

11/20/2012

Flight Area

R-6701 (Admiralty Bay) – Class E
NAS Whidbey Island, Washington

Testing will occur under the R-6701 airspace indicated in Figure 1, below. Most testing will be conducted within the primary test area as defined in Figure 2. A secondary test area is defined in Figure 3.

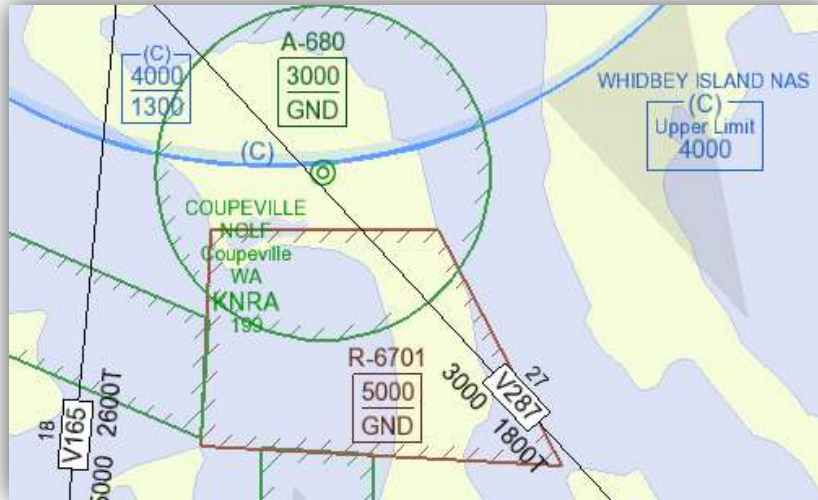


Figure 1: R-6701

R-6701 Coordinates:

<i>Northwest Corner:</i>	<i>N48°10'</i>	<i>W122°41'</i>
<i>East to:</i>	<i>N48°10'</i>	<i>W122°34.9'</i>
<i>Southeast to:</i>	<i>N48°05.7'</i>	<i>W122°31.6'</i>
<i>West to:</i>	<i>N48°06.1'</i>	<i>W122°41.3'</i>
<i>North to:</i>	<i>N48°10'</i>	<i>W122°41'</i>

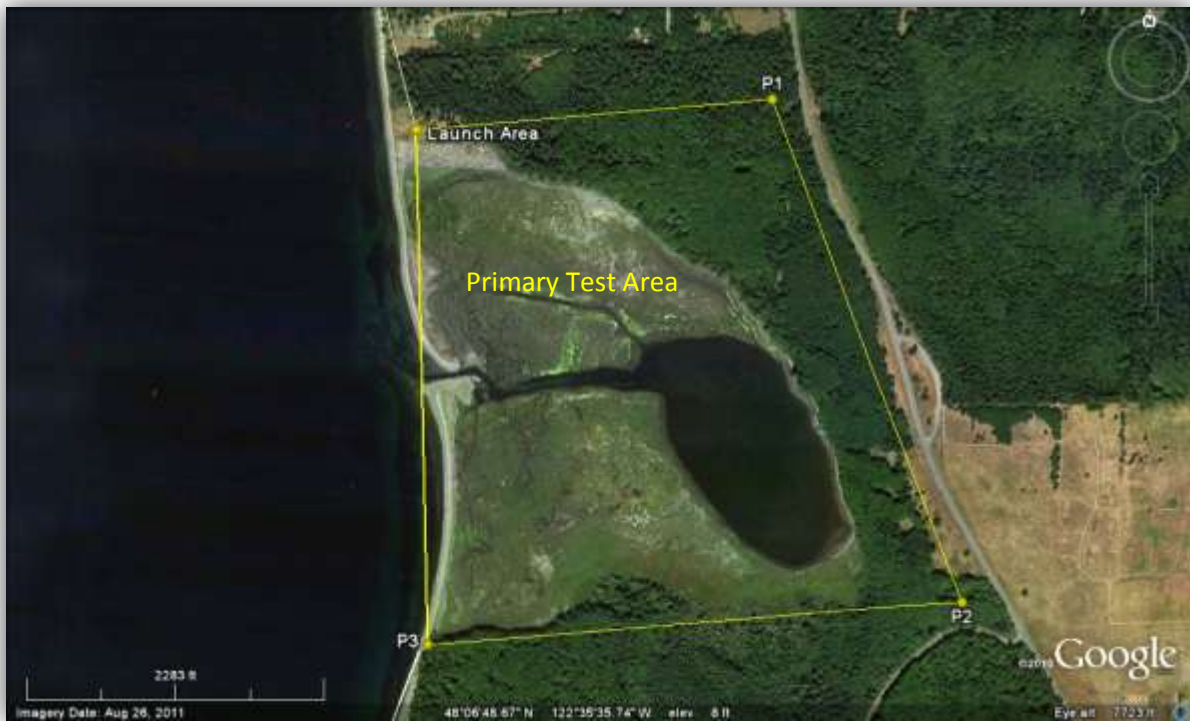


Figure 2: Primary Test Area

Test Area Coordinates:

<i>Launch Area:</i>	<i>N48°07.1'</i>	<i>W122°35.9'</i>
<i>Point P1:</i>	<i>N48°07.1'</i>	<i>W122°35.2'</i>
<i>Point P2:</i>	<i>N48°06.5'</i>	<i>W122°34.9'</i>
<i>Point P3:</i>	<i>N48°06.5'</i>	<i>W122°35.9'</i>

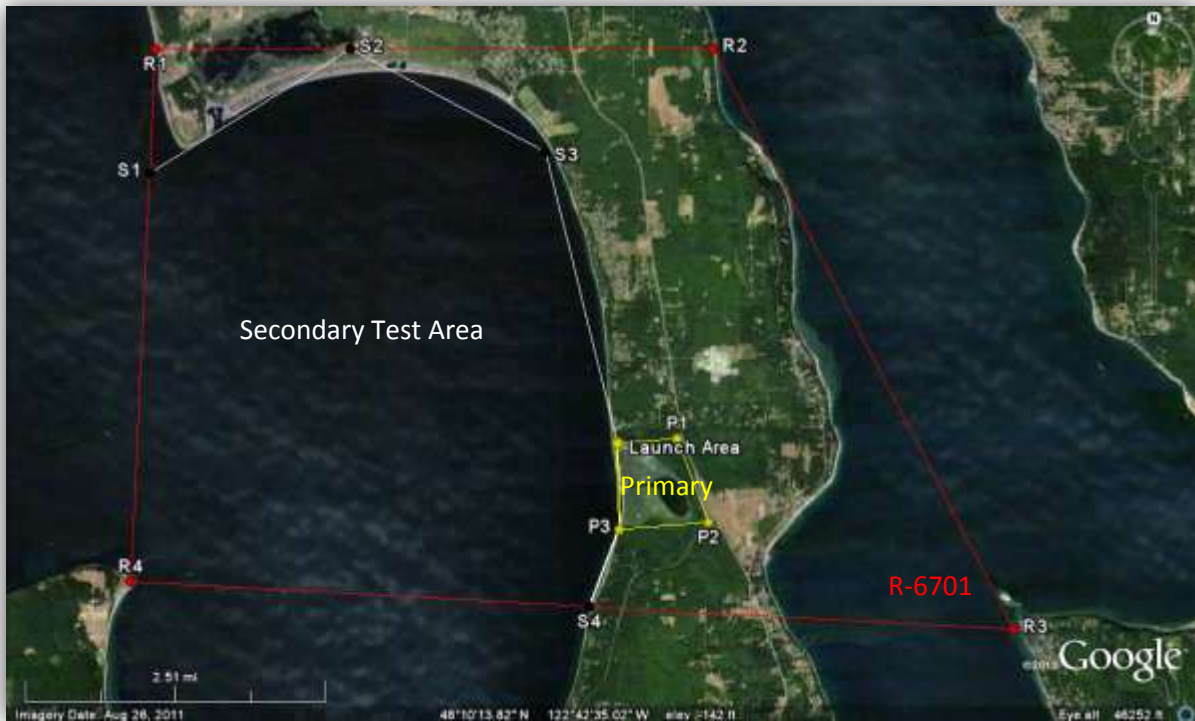


Figure 3: Secondary Test Area

Secondary Test Area:

<i>Point S1:</i>	<i>N48°09.1'</i>	<i>W122°41.1'</i>
<i>Point S2:</i>	<i>N48°09.9'</i>	<i>W122°38.9'</i>
<i>Point S3:</i>	<i>N48°09.2'</i>	<i>W122°36.7'</i>
<i>Launch Area:</i>	<i>N48°07.1'</i>	<i>W122°35.9'</i>
<i>Point P3</i>	<i>N48°06.5'</i>	<i>W122°35.9'</i>
<i>Point S4:</i>	<i>N48°05.9'</i>	<i>W122°36.3'</i>
<i>Point R4:</i>	<i>N48°06.1'</i>	<i>W122°41.3'</i>

Most of the flight testing will occur between 100 and 3000 feet AGL. The maximum operating altitude will be 5000 feet AGL. The flight endurance of the UAVs is between 30 – 45 minutes, typically. Flights will vary in duration but will typically not exceed 30 minutes. The quantity and frequency of experimental flights will be dependent on the results of the preceding flights.

Flight testing will be conducted under VFR and VMC conditions, and will maintain LOS communication and operation.