

# SCALA

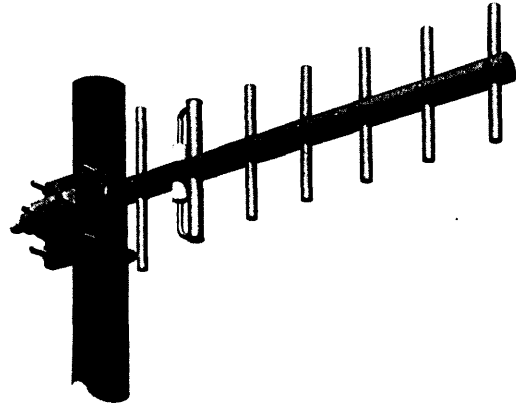
PROFESSIONAL ANTENNA SYSTEMS FOR  
BROADCAST AND COMMUNICATIONS

## TY-900 YAGI ANTENNA

10 dBd gain  
890–960 MHz (broadband)

The Scala TY-900 is a rugged broadband yagi antenna specifically designed for professional fixed-station applications in the 890–960 MHz band.

The TY-900 is fabricated of 6061/T6 aluminum rod and seamless drawn pipe, anodized for maximum reliability and corrosion resistance. The hardware and fastenings are stainless steel. The internal balun, coax feed and connector are sealed in a foam potting system to prevent moisture penetration and assure long service life in severe environmental conditions. The heavy aluminum mounting casting allows installation for V or H polarization.

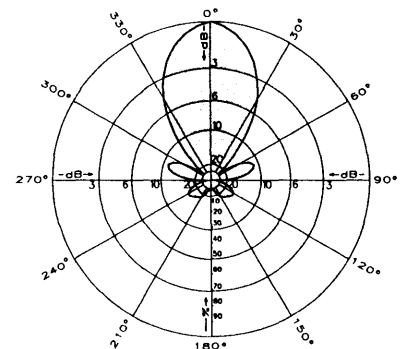


(Shown vertically polarized)

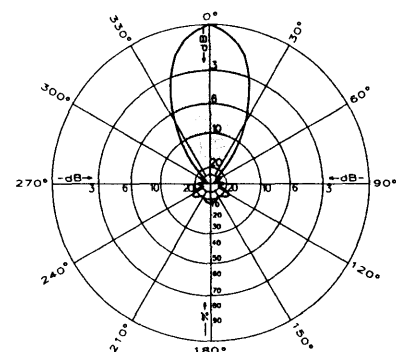
### Specifications:

Frequency range	890–960 MHz (broadband)
Gain	10 dBd
Impedance	50 ohms
VSWR	< 1.5:1 maximum (1.35:1 typical)
Polarization	Horizontal or vertical
Front-to-back ratio	>20 dB
Maximum input power	100 watts
H-plane beamwidth	48 degrees (half-power)
E-plane beamwidth	40 degrees (half-power)
Termination	N female
Weight	3 lb (1.4 kg)
Dimensions	23 x 7 inches (584 x 178 mm)
Equivalent flat plate area	0.31 ft <sup>2</sup> (0.03 m <sup>2</sup> )
Wind survival rating	150 mph (240 kph)
Shipping dimensions	24 x 16 x 4 inches (610 x 406 x 102 mm)
Shipping weight	5.0 lb (2.3 kg)
Mounting	For masts of 1.25 to 2.375 inch (32 to 60 mm) OD.

See reverse for order information.



H-plane  
Horizontal pattern – V-polarization  
Vertical pattern – H-polarization



E-plane  
Horizontal pattern – H-polarization  
Vertical pattern – V-polarization

## SCALA ELECTRONIC CORPORATION

Post Office Box 4580 Phone: (541) 779-6500  
Medford, OR 97501 (USA) Fax: (541) 779-3991  
<http://www.scala.net>

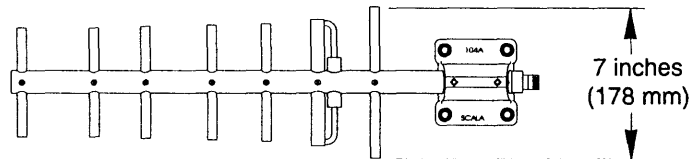
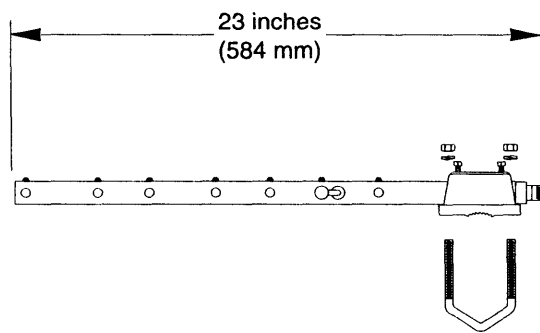
Scala Electronic Corporation is a member of the Kathrein Group

Exhibit 4 (obverse)

Mounting Hardware

# SCALA

**TY-900**  
**YAGI ANTENNA**  
10 dBd gain  
890–960 MHz (broadband)



**Order Information:**

Model	Stock Code
TY-900	91752-004

**SCALA ELECTRONIC CORPORATION**

Post Office Box 4580 Phone: (541) 779-6500  
Medford, OR 97501 (USA) Fax: (541) 779-3991  
<http://www.scala.net>

All specifications are subject to change without notice

Exhibit 4 (Reverse)