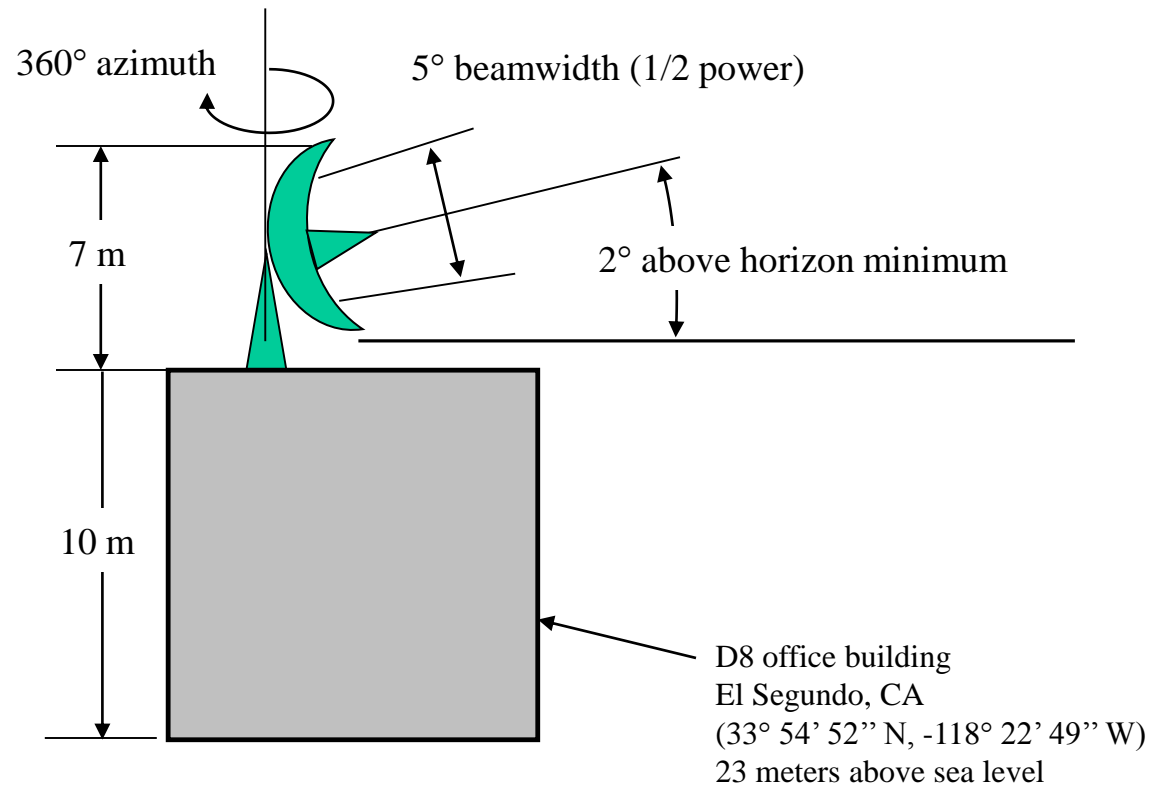


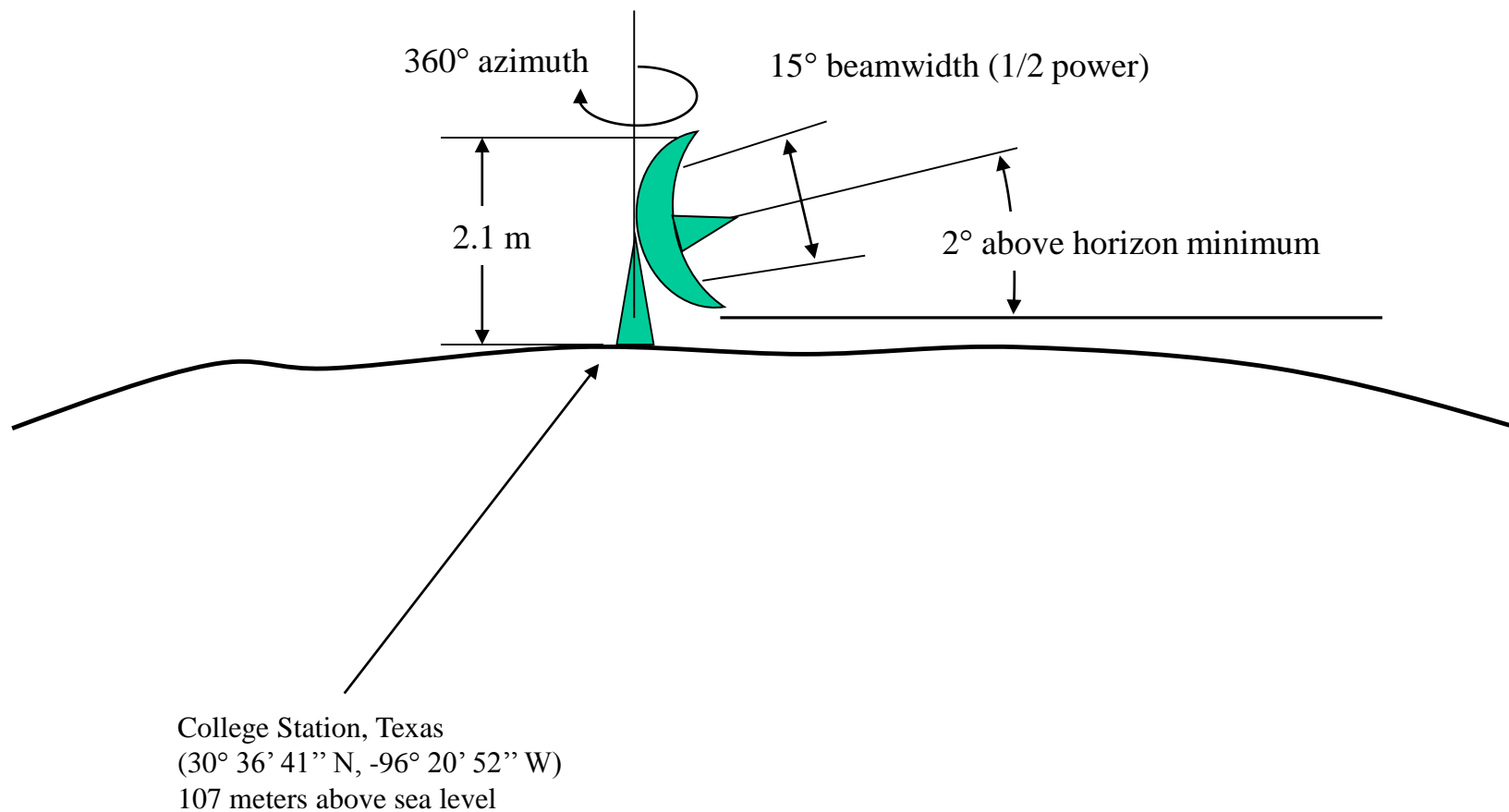
# 1) El Segundo antenna

## Beam Characteristics and FAA sketch



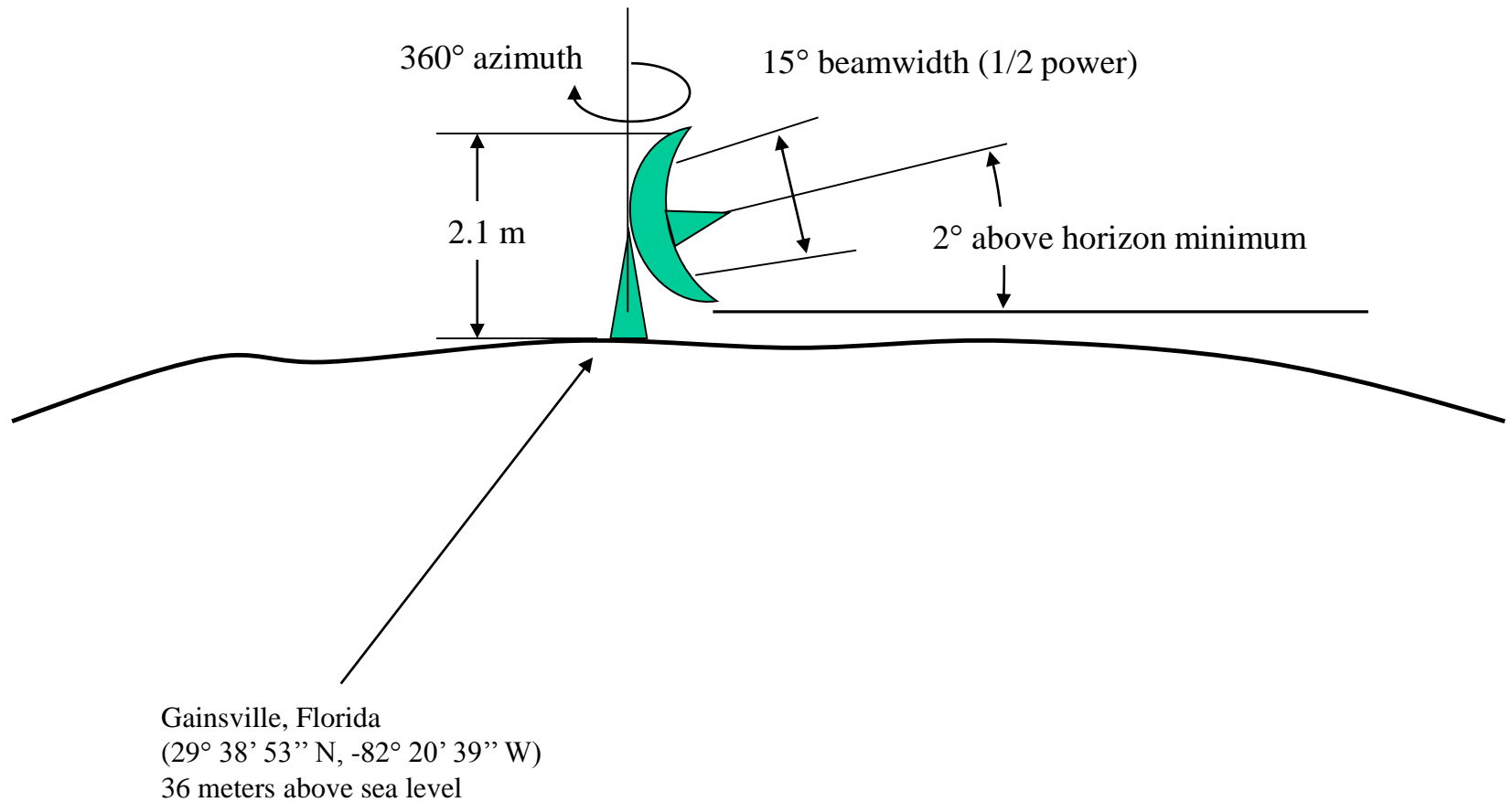
## 2) Texas A&M antenna

### Beam Characteristics and FAA sketch



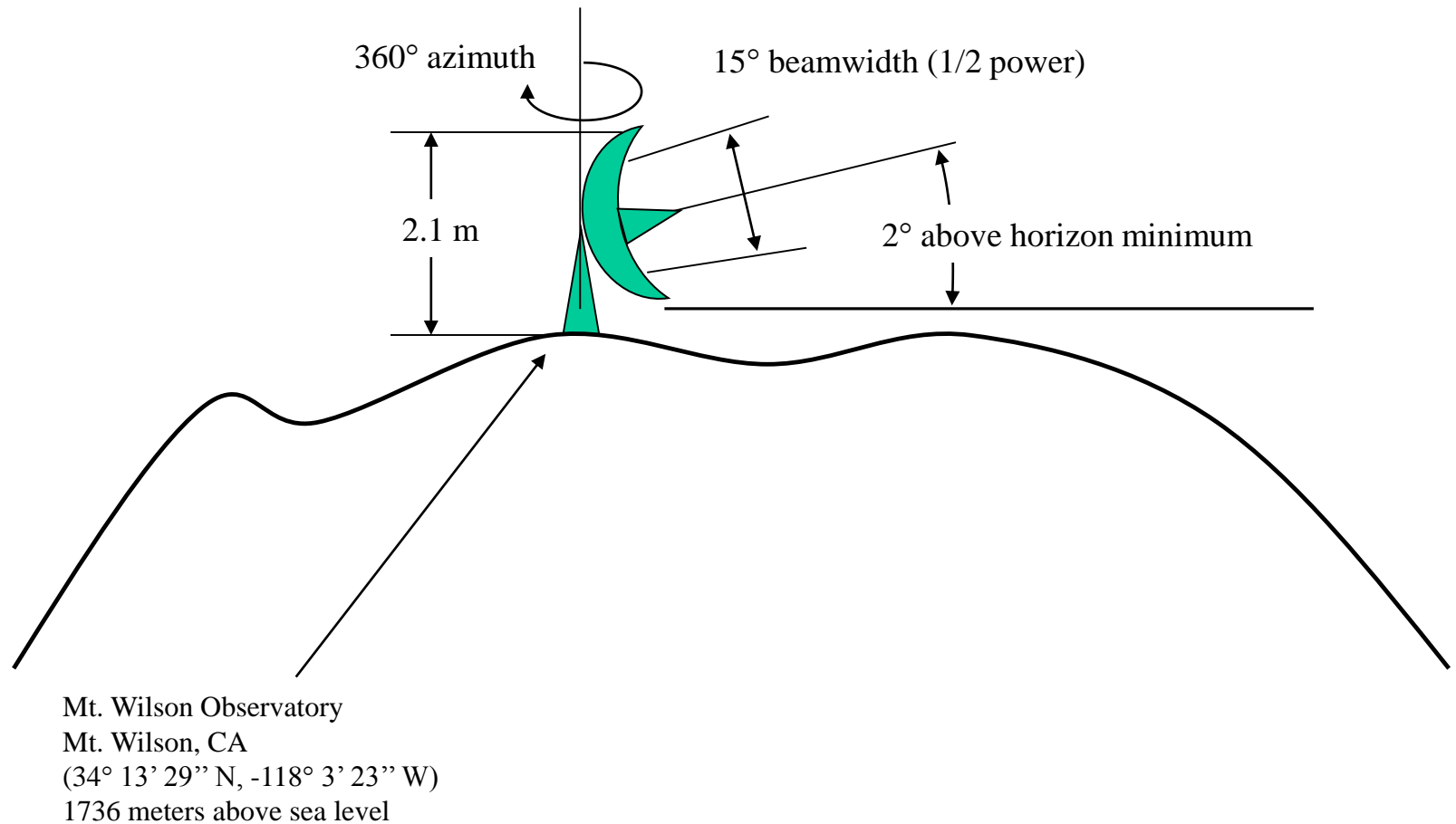
### 3) University of Florida antenna

#### Beam Characteristics and FAA sketch



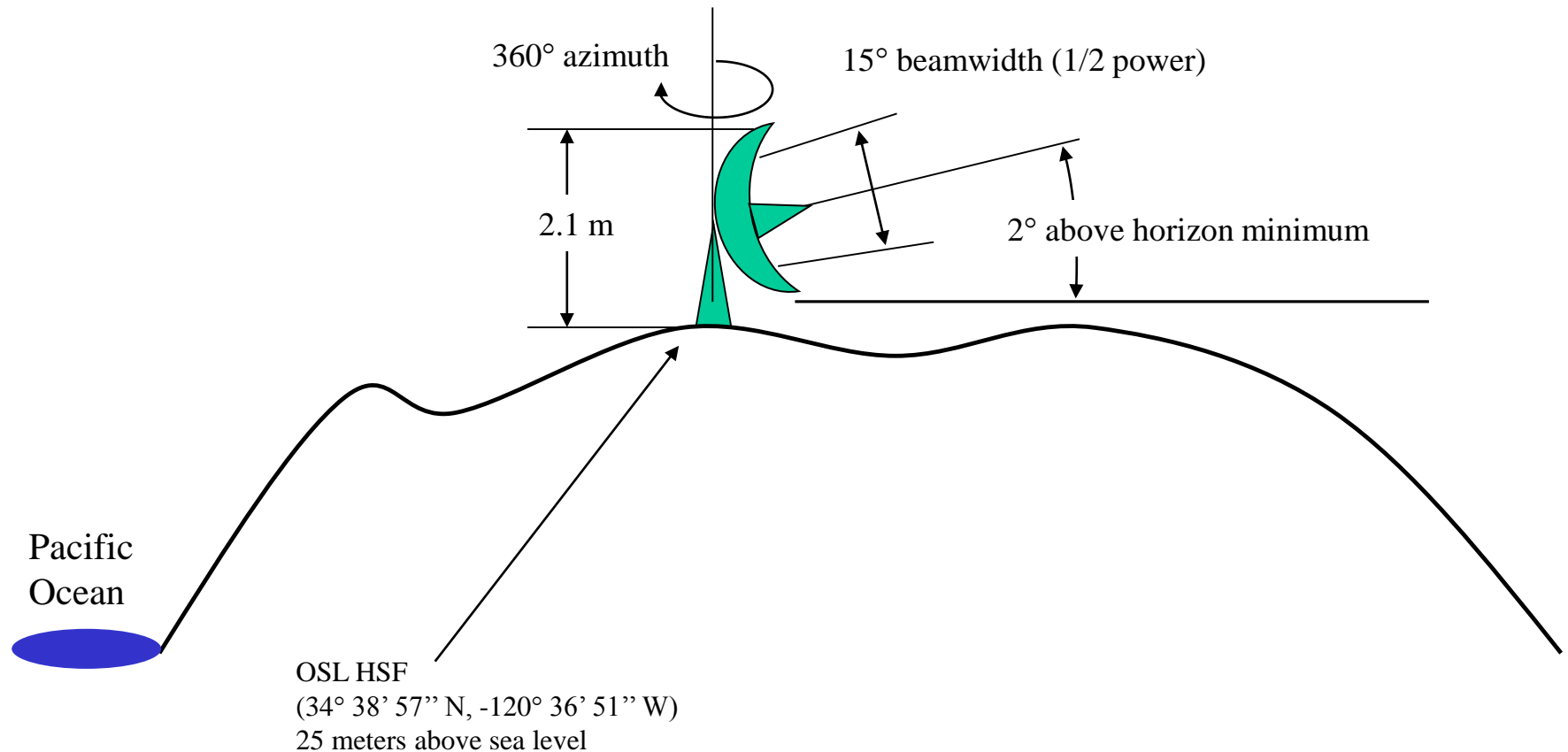
#### 4) Mt. Wilson, CA

### Beam Characteristics and FAA sketch



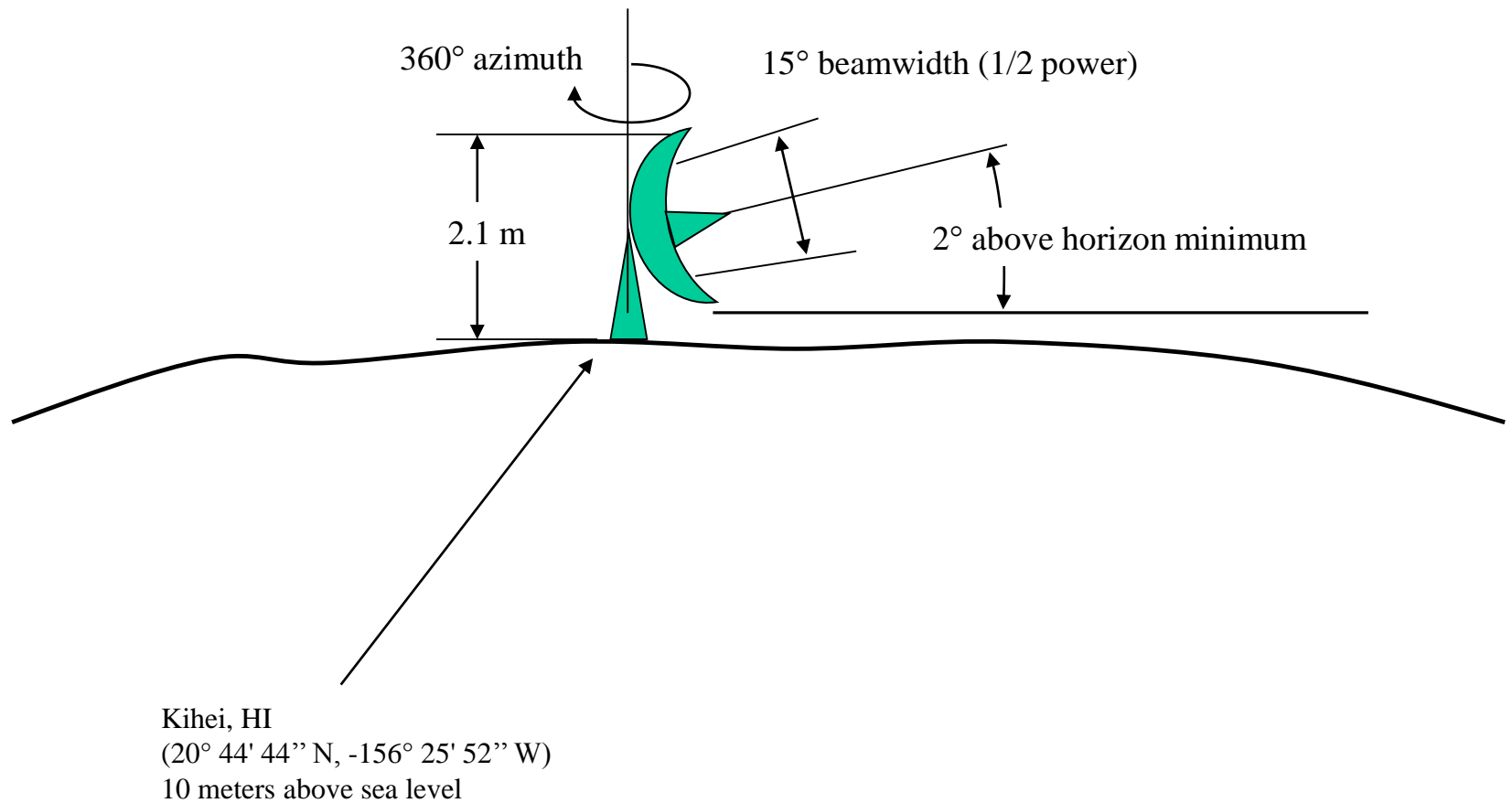
## 5) USAF Base, Vandenberg, CA

### Beam Characteristics and FAA sketch



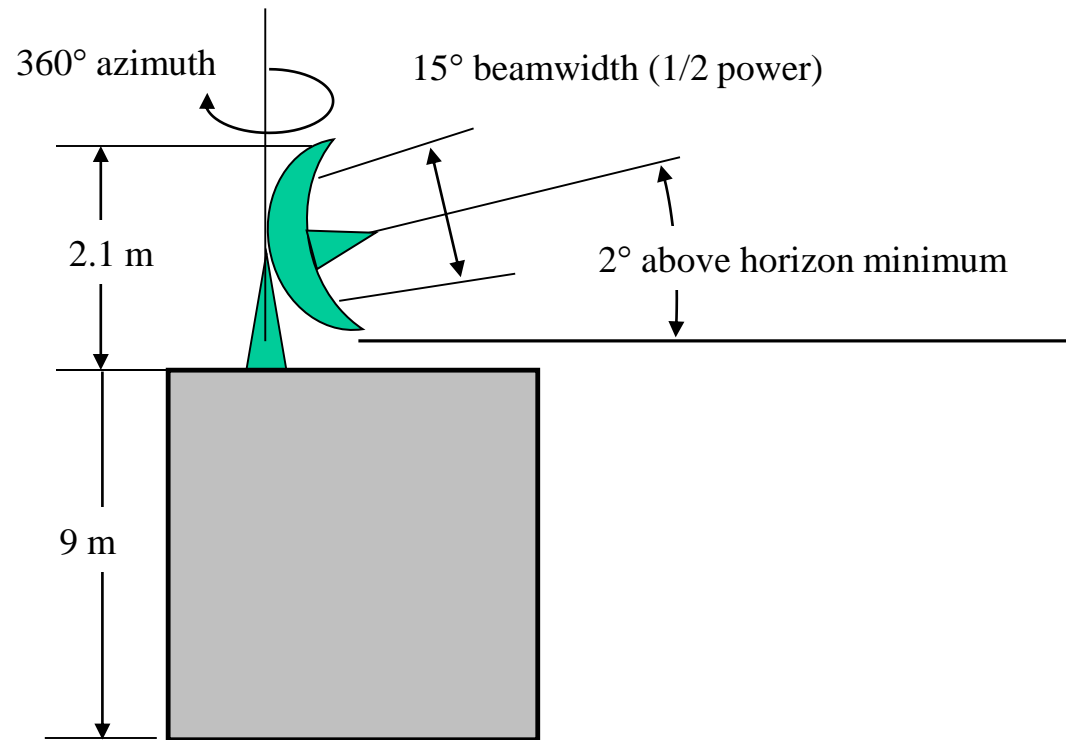
## 6) AFRL/RDSM, Kihei, Maui, HI

### Beam Characteristics and FAA sketch



## 7) Space Dynamics Lab

### Beam Characteristics and FAA sketch



Logan, Utah  
(41° 45' 48" N, -111° 49' 19" W)  
1,382 meters above sea level