

**STATEMENT ACCOMPANYING MODIFICATION REQUEST ADDRESSING  
APPLICATION 0043-EX-CM-2016-WI2XHM**

AeroVironment, Inc. (AV), respectfully requests that it be permitted to modify Application 0043-EX-CM-2016, which proposes an additional site to experimental license WI2XHM. WI2XHM authorized experimental use to operate facilities in the 2030-2035 MHz, 2065-2070 MHz and 2096-2101 MHz band segments. The purpose of this modification application is to correct an error in the frequency segments requested and to add additional sites in Taft, California to WI2XHM. As with the current authorization, the testing and experiments are for the US Department of Defense (DoD) and relate to the military's transition from current frequency locations. AV has contractual agreements with the US Military Services.

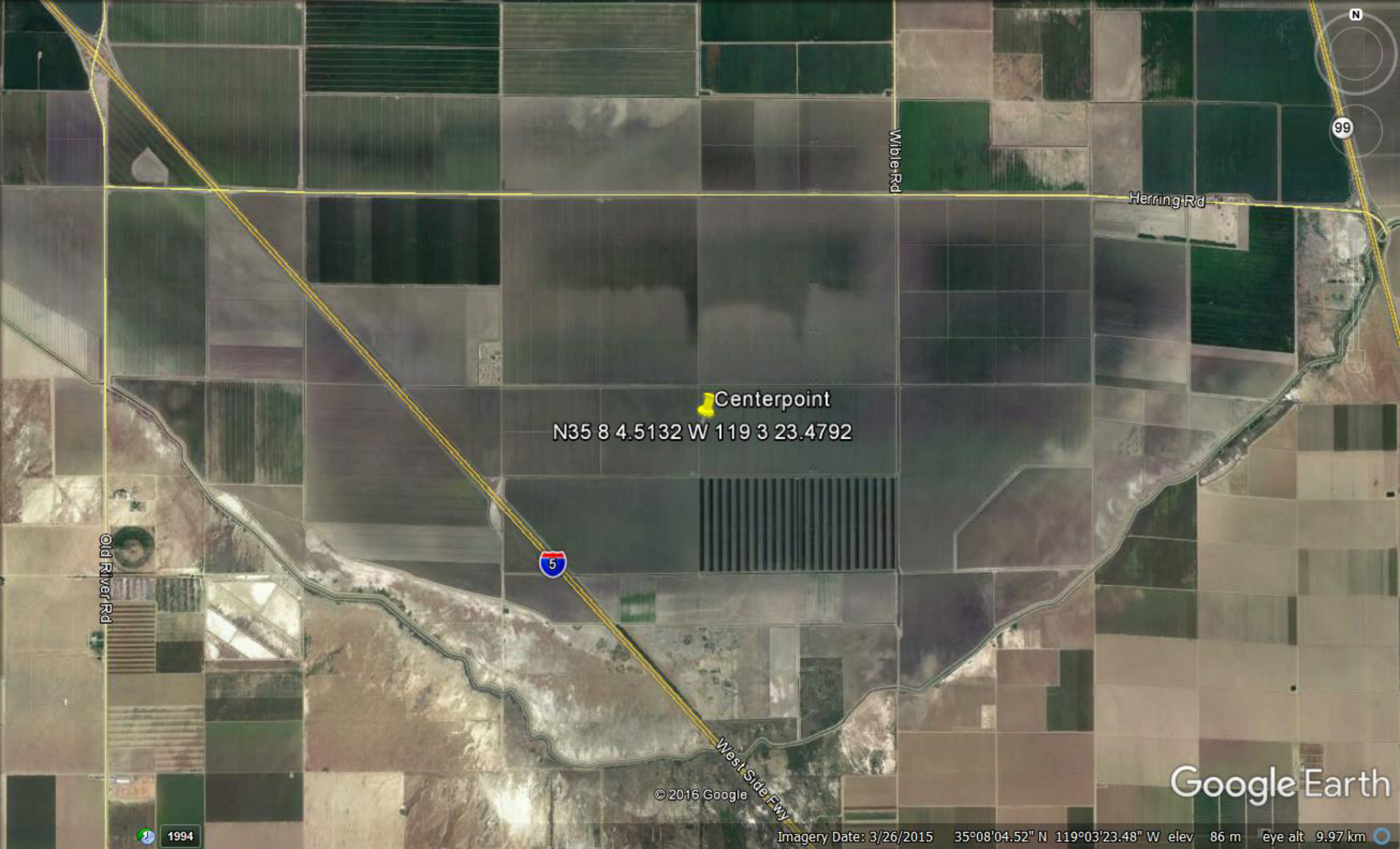
The frequency segments proposed for Dugway Proving Ground, Utah should be 2030-2035 MHz, 2065-2070 MHz and 2096-2101 MHz band and are now inserted into the application within the parameters proposed.

Authority to operate two transmitters, in addition to the UAS, within a described radius in Taft, Kern County, California is also requested in this modification. Taft is located in the foothills at the extreme southwestern edge of the San Joaquin Valley, in Kern County, California.

As the Commission knows, use of these frequency segments is coordinated with the Society of Broadcast Engineers (SBE); the segments are used by the Broadcast Auxiliary Service. In efforts with SBE's local coordination managers, AV comprehends that the greater distance and/or insulation from potential broadcast auxiliary use, the more efficient the coordination process. It is for this reason that Dugway and Taft are proposed as each presents rural locations. Additionally, as Dugway is located within DoD airspace and AV has a Certification of Authorization (COA) from the Federal Aviation Administration (FAA) for airspace located in Taft, there is authority to conduct unmanned aircraft system (UAS) operations.

AeroVironment appreciates the Commission consideration of this application and the courtesy it has extended.

**TAFT, KERN COUNTY, CALIFORNIA RADIUS LOCATION**  
Transmitters within 30 km Radius of N 35° 8' 4.5132 W 119° 3' 23.4792



Centerpoint

N35 8 4.5132 W 119 3 23.4792



Old River Rd

Wible Rd

Herring Rd

West Side Fwy

© 2016 Google

Google Earth

1994

Imagery Date: 3/26/2015 35°08'04.52" N 119°03'23.48" W elev 86 m eye alt 9.97 km