

Antenna specification

Company Name

Sincere inc

Company address

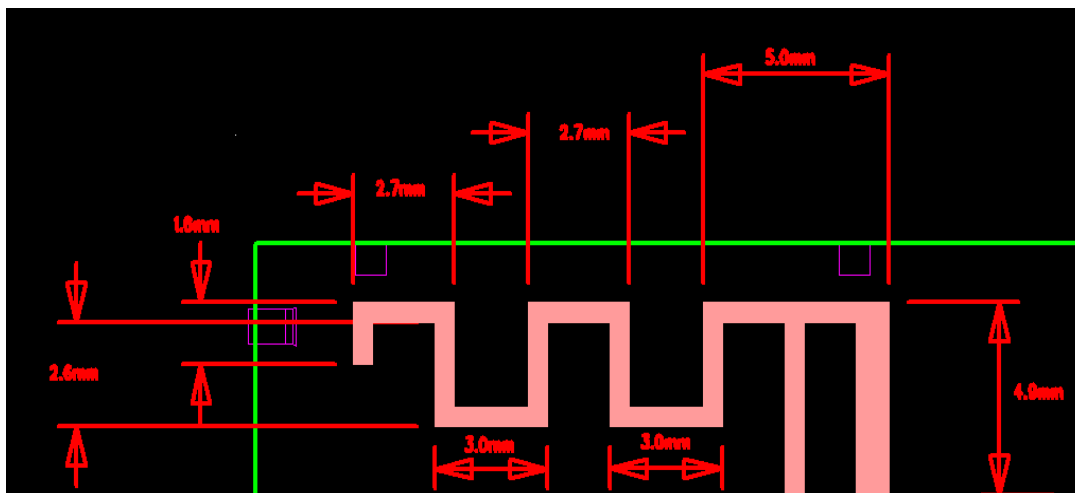
3-3-21, Nippombashi, Naniwa-ku, Osaka Japan 556-0005 06-6645-1000

Applications

※Bluetooth Home RF

※ISM band 2.4GHz applications

1. Dimensions



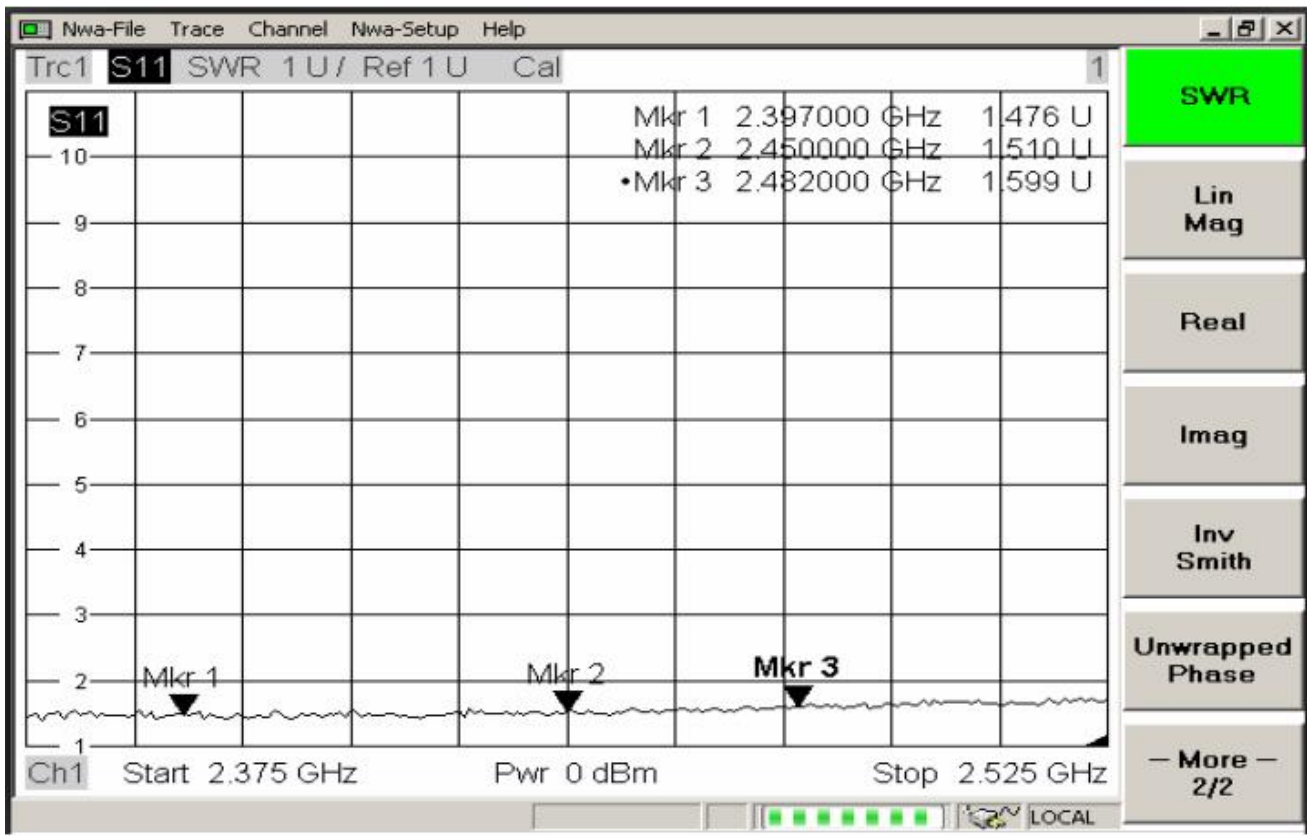
2. Specifications

number	Item	Specifications
1	Working Central Frequency	2441 MHz
2	Band Width	(2402-2480)MHz
3	Gain	0dBi
4	VSWR	≤2.0
5	Antenna type	PCB antenna
6	Azimuth Beam width	Omni - directional
7	Impedance	50ohm
8	Modulation mode	GFSK

3. simulation parameter

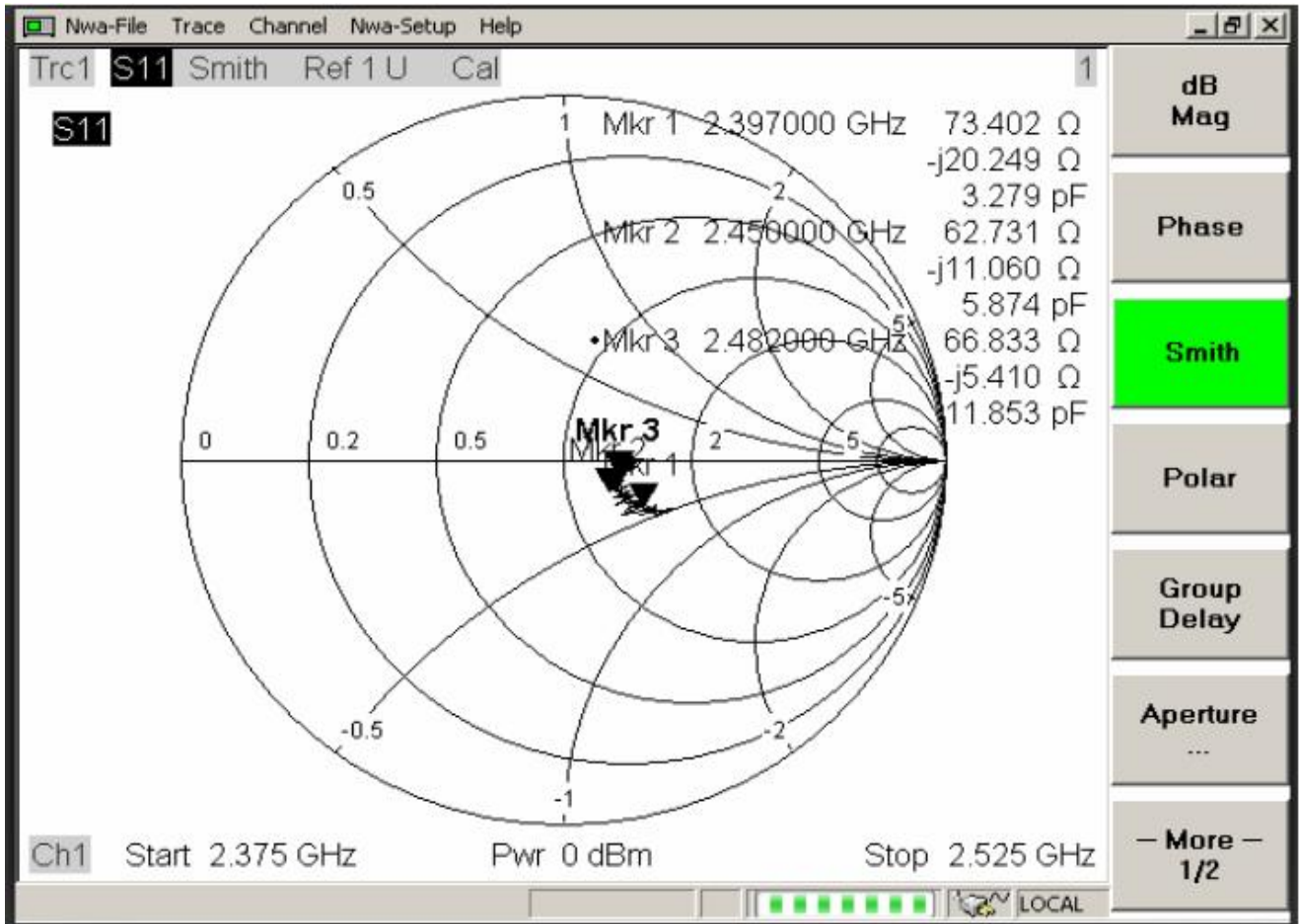
① VSWR

Mkr1: 2397MHz 1.47 Mkr2: 2450MHz 1.51 Mkr3: 2482 MHz 1.59



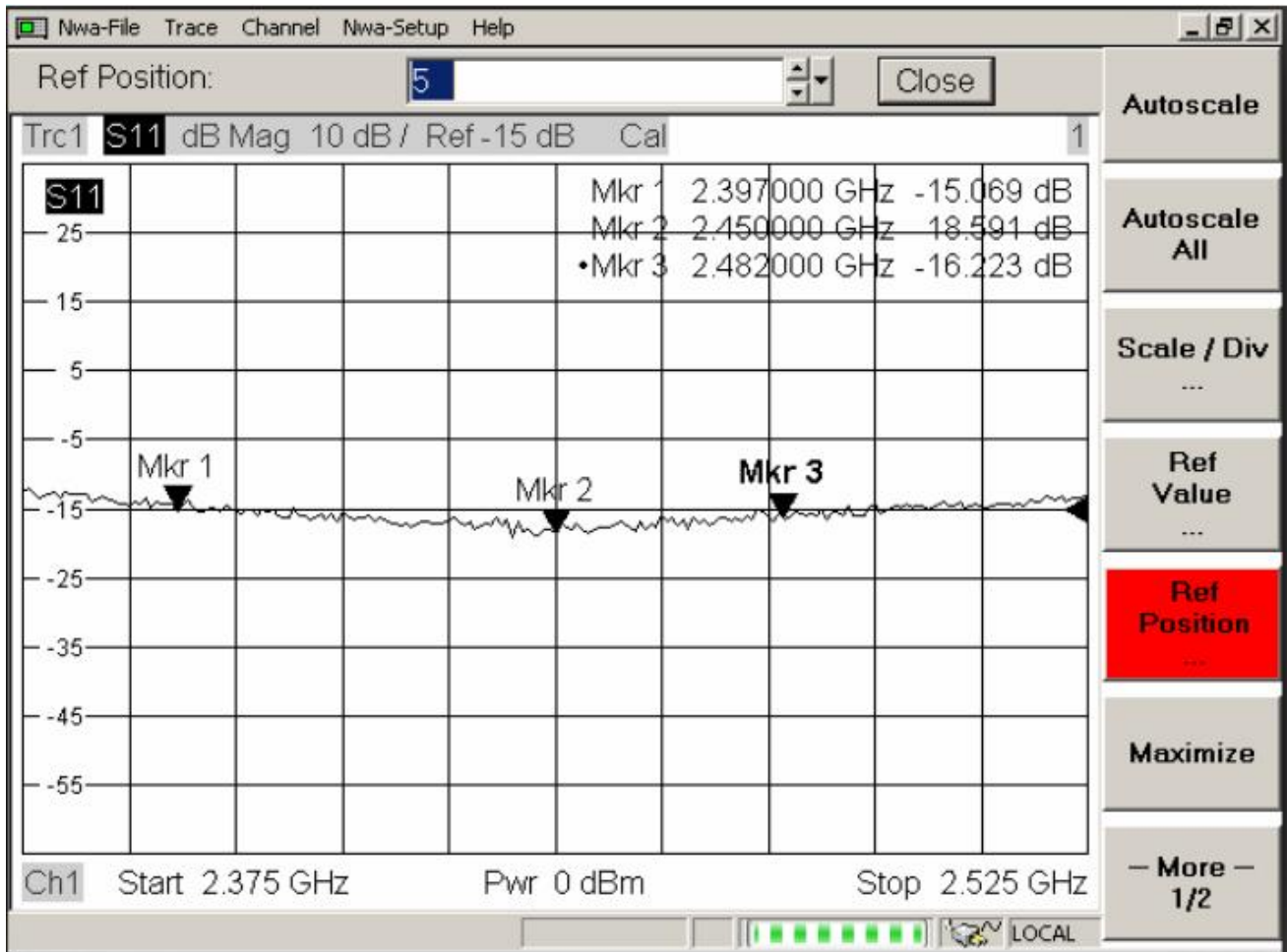
②Smith Char

Mkr1: 2397MHz 73.4 Mkr2: 2450MHz 62.7 Mkr3: 2482MHz 66.8



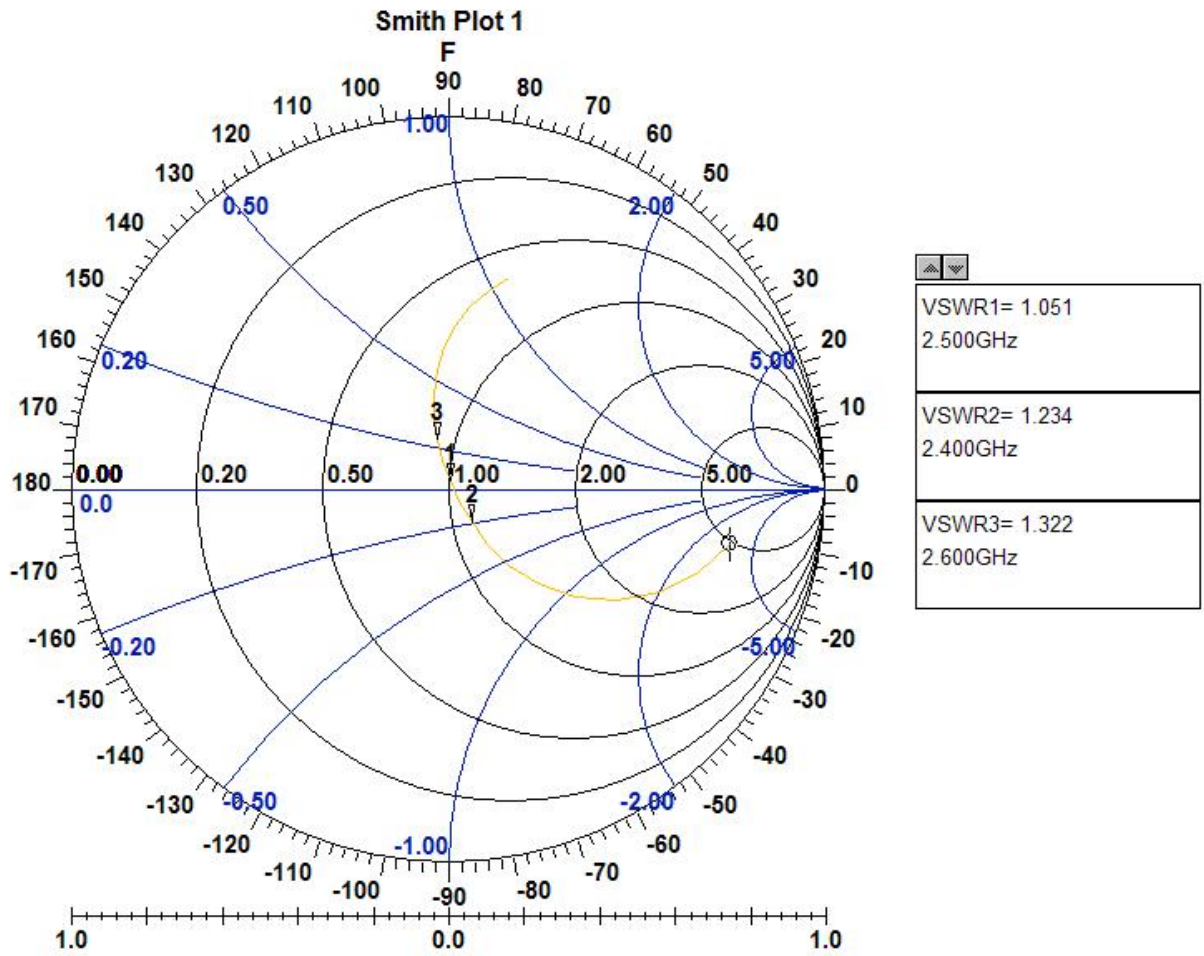
③Return Loss

Mkr1: 2397MHz -15 Mkr2: 2450MHz -18 Mkr3: 2482 MHz -16



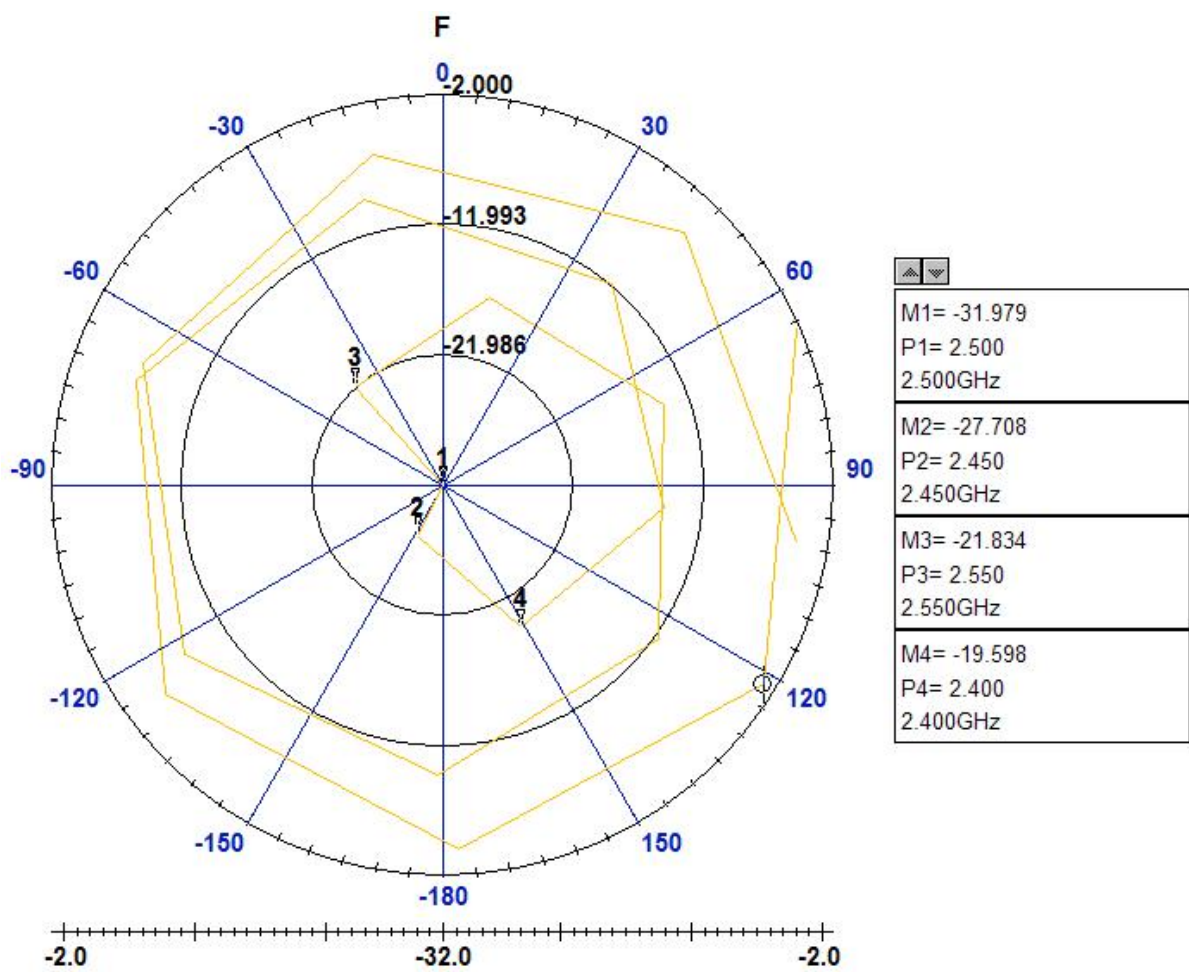
④Smith Char

Mkr1: 2400MHz 1.234 Mkr2: 2500MHz 1.051Mkr3: 2600MHz 1.322



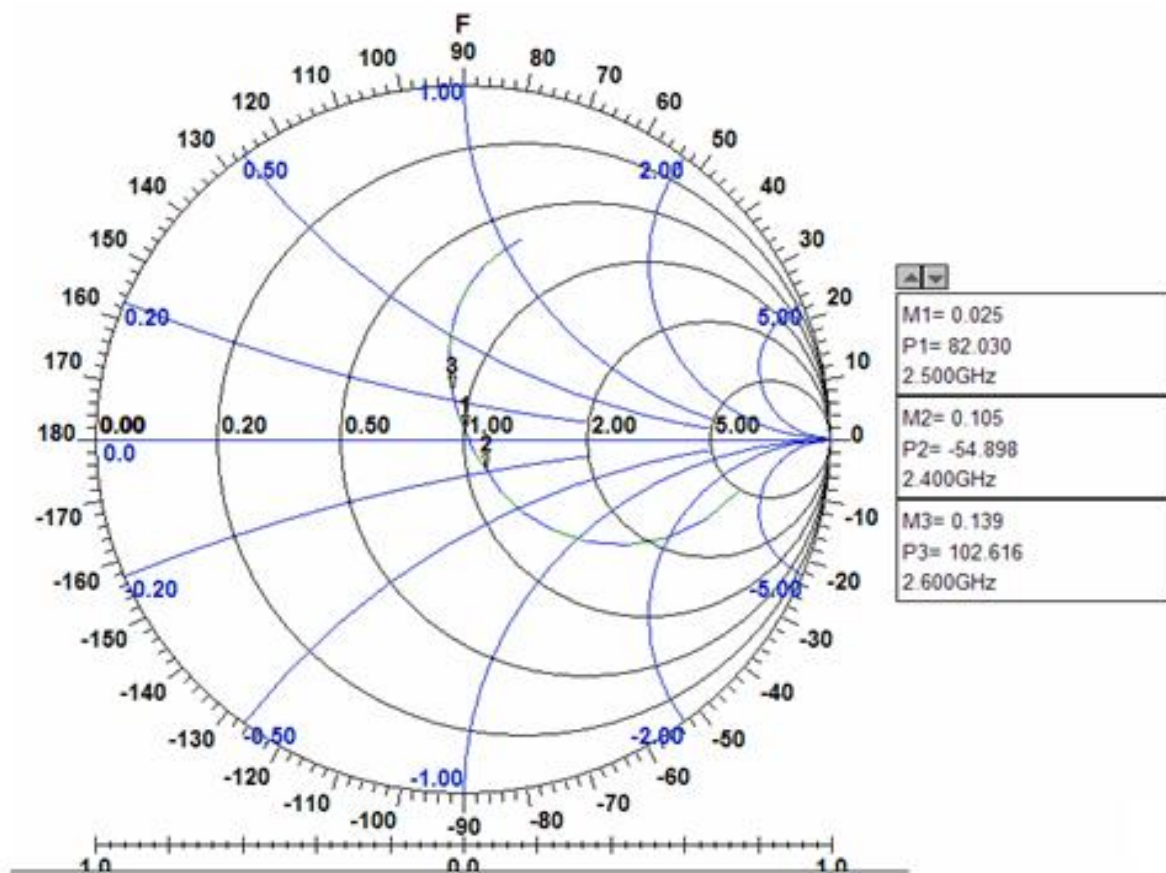
⑤Return Loss

Mkr1: 2400MHz -19.59 Mkr2: 2450MHz -27.70Mkr3: 2500MHz -31.97 Mkr4:
2550MHz -21.83



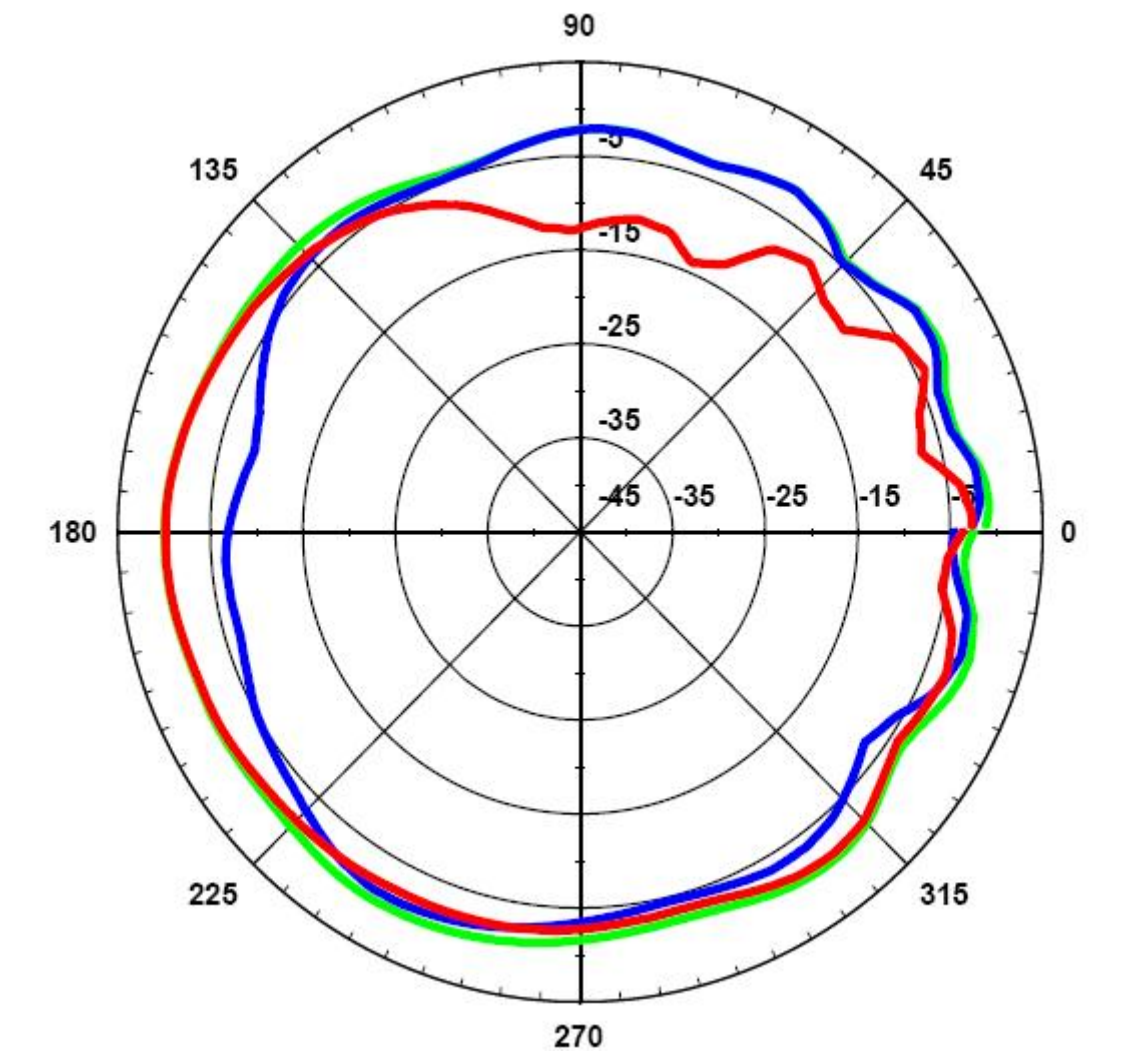
⑥Phase

Mkr1: 2400MHz -54.89 Mkr2: 2500MHz -82.03 Mkr3: 2600MHz -102.6



4. Radiation Patterns

XY-plane ————
XZ-plane ————
YZ-plane ————



- 3DRadiation pattern

