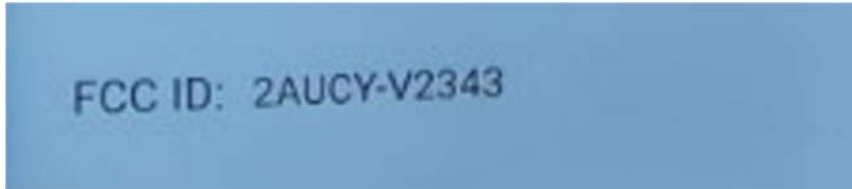


# FCC E-Label Information

**A. Images of the e-label screen are provided below:**



**B. Access to the required information on the e-label**

**Users are able to access the information in no more than three steps in a device's menu.**

**The actual steps are:**

**Settings >About Phone>Status**

*No any special accessories, access codes, or SIM card are required to go through the above steps.*

**C. Devices have physical labels at point of marketing/sale visible to the purchaser (or in the alternative, on the packaging), and at time of importation?**

*At the time of importation, marketing, and sale, the device will have the required physical label on the packaging, which will include the device's FCC ID.*

**D. Electronic labeling information is programmed into the device by the manufacturer at the time of manufacture.**

*Yes.*

**E. Electronic labeling information not modifiable by any third party.**

*The e-label of the device is programmed by the grantee and secured in such a manner that it cannot be modified by third parties.*

**F. All the applicable regulatory information required on the packaging or user instructions is provided according to the rules.**

*Applicable regulatory information not found in the e-label is contained in the user manual.*