

MONSTER™ SMART LIGHTING



SMART RGB+IC FLOW LIGHT STRIP QUICK START GUIDE

GETTING STARTED

Thank you for choosing this Smart RGB+IC Flow Light Strip. This **Quick Start Guide** will help you with setup and installation of your device.

WHAT'S IN THE BOX

- 2x 49.2ft/15m LED Light Strips with preinstalled mounting adhesive (total length with connector 100ft/30m)
- 1.6ft/0.5m Light Strip Y Connector
- 24V 1A Power Adapter with 4.9ft/1.5m cord
- 2x Adhesive Controller Mounting Clips
- Light Strip Mounting Clips + Screws
- Quick Start Guide

WHAT DO YOU NEED?

- Wi-Fi router with 2.4GHz 802.11 network
- Mobile device running Android 9.0 Pie or higher / iOS 12 or higher, with Bluetooth and location enabled
- Monster Smart Lighting app on your mobile device

TIP: Do you know your Wi-Fi network name and password? Write it down now if it's hard to remember.

ANYTHING ELSE?

Your LED Light Strip comes with preinstalled mounting adhesive, but you should use the included mounting clips and screws if you would like a more secure installation. You will need a phillips head screwdriver to install with the clips.

TIP: Save these instructions for future reference.

SETUP COMPLETE SETUP BEFORE INSTALLATION

Remove all components from the box. It is recommended to first pair your device in a location close to your router **BEFORE** installation.

STEP 1

Download the free **Monster Smart Lighting** app from the App Store (for iPhone) or Google Play Store (for Android phones).

Open the **Monster Smart Lighting** app and create an account by following the on-screen instructions.



SCAN HERE TO INSTALL

NEW!

STEP 2

Before you start, we need to set up a few things for a smooth pairing process:

- Make sure your phone or tablet is successfully connected to the **2.4GHz Wi-Fi network** that your device will be placed on.
- Enable **Bluetooth** and **location** - To find pairable devices and successfully connect them with your home network, you must allow access to location services when prompted.



NOTE Most Smart devices only set up on a **2.4GHz Wi-Fi network** for longer ranges and transmission through walls. Many newer home Wi-Fi networks are mixed networks that are set to 5GHz by default (ex: AT&T, Verizon) and you may need to access your router settings and/or call your Internet Service Provider to create a separate 2.4GHz network.

STEP 3

Connect each section of LED Strip to the plugs on the controller, be sure to align the arrows on both sides of the plug.

Connect the other end of the controller to the included 24V 1A power adapter and plug it in, the light should turn on.

For ease of Wi-Fi setup, your device will power on into pairing mode, indicated by the light blinking rapidly.

Note: If you need to restart pairing mode or reset the device at any time, press and hold the button for 8 seconds.



STEP 4

In the **Monster Smart Lighting** app, select the "+" and then "device" to add a new device.

Allow permissions when prompted.

Follow the on-screen instructions to add your device.

STEP 5

Once the pairing process is complete, your device will receive any available updates from the network.

Please Note: Installing the newest and best features may take up to 5 minutes.

CONGRATULATIONS!

Your device is now connected and ready to use. You can use the app to adjust settings, create custom lighting effects, set schedules, setup voice control, and more!

Note: Now that setup is complete, your mobile device no longer needs Bluetooth enabled or to stay on your 2.4GHz network to operate your lighting device. Using the **Monster Smart Lighting** app, you can control your device from anywhere!

INSTALLATION

STEP 1

Determine where you will install the LED Strip

- Location is close to a power source
- Mounting surface is smooth and clean

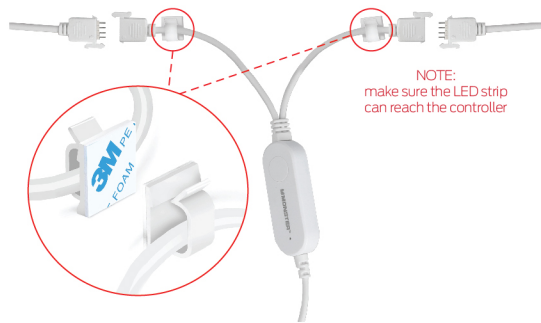
Clean the mounting surface with a clean cloth and rubbing alcohol to remove any dust or oils that will weaken the adhesive. Be sure to let this surface dry before installation.

NOTE: This adhesive is not recommended for use on unpainted brick, raw wood, or uneven/bumpy surfaces such as textured wallpaper. In these cases, please ALSO use the mounting clips.

STEP 2

Begin installation with the controller in a central location.

After cleaning the surface and allowing it to air dry, use the included peel-and-stick adhesive cable clips to support the controller at the plugs.



TIP: Make sure to press these clips firmly to the wall or surface and hold in place for a 5-10 seconds for best adhesion. The bond will strengthen over the next few hours.

STEP 3

Peel off the beginning of the adhesive backing and firmly stick the LED Strip onto the surface. Peel off more of the adhesive backing as you mount the LED Strip, pressing on each section of the strip for 10 seconds as you place it.

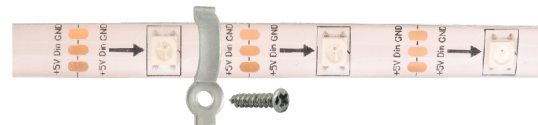


TIP: For best mounting results, place adhesive onto the desired surface with ONE attempt. Reapplying multiple times will not guarantee secure mounting onto the surface.

STEP 4

Using the included mounting clips and screws, and a phillips head screwdriver (not included), install the mounting clips over the LED Strip in equal intervals.

If mounting around a corner or bend, it is recommended to install one clip on each side of the corner.



STEP 5

Connect the adapter cord to the light strip, then plug the adapter into a powered outlet. The LED Strip will automatically reconnect to the paired Wi-Fi network and will now be ready to use!



HOW TO USE

APP CONTROL

In the **Monster Smart Lighting** app you can customize your experience by exploring color, modes, scenes & music syncing.



- Device Icon
- Adjustments
- Mode Selection: White, Color, Multicolor Scenes, Music Reactive
- Color/Scene Selection
- Timers and Schedules
- Power

BUTTON CONTROL

Alternative to using your phone



- POWER:** double press - press twice quickly to power on or power off color lighting
- MODES:** press and hold 2 sec - cycle between White, Color, Static, Dynamic, DIY, & Music Modes
- COLOR/SCENES:** single press - change between Color/Scene presets (or access the custom edits of scenes, requires Wi-Fi pairing and app)
- RESET/PAIR:** long press and hold 8 sec - reset device and to pair to your Wi-Fi network

microphone opening