

Bluetooth antenna of PCB on-board specification

1, Index

Item	Content	Page	Remark
1	Index	1	
2	Spec Drawing	2	
3	Specification	2	
4	Antenna On Test Board	3	
5	Return Loss	3	
6	Radiation Pattern	3	

Document Type: 2.4GHZ PCB antenna
Document Version: V1.0
Release Date: July 6, 2019

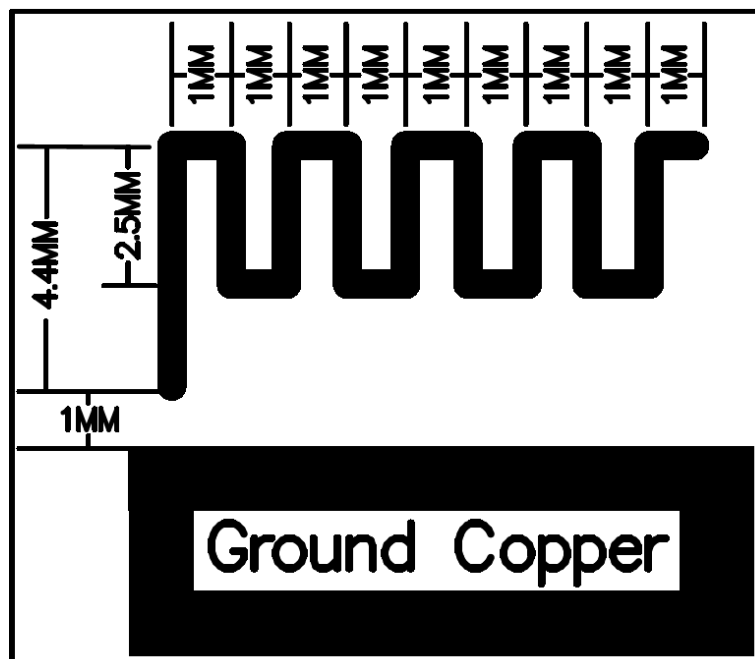
SYCREADER ELECTRONIC (GUANGZHOU) CO.,LTD

Telephone: 86-020-32229138

广东省广州市增城区新城大道400号低碳总部园15号楼502

www.sycreader.com

2, Spec Drawing



3, Specification

Product Number: 2.4GHZ PCB antenna

Sample Photo:



A. Electrical Characteristics

Frequency	2400 ~ 2500 MHz
S.W.R.	≤ 2.0
Gain	3 dBi
Efficiency	~ 17%
Polarization	Linear
Impedance	50 Ohm

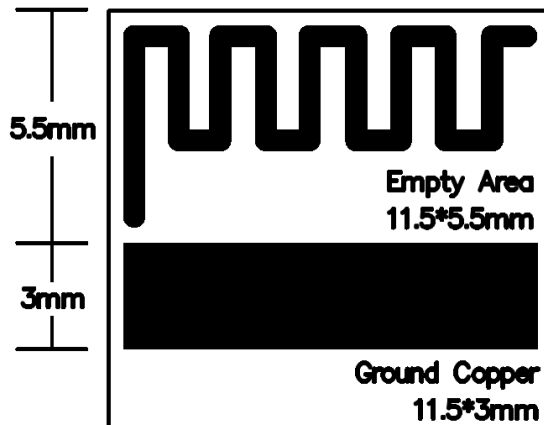
B. Material & Mechanical Characteristics

Material of Radiator	Gold-plated copper
----------------------	--------------------

C. Environmental

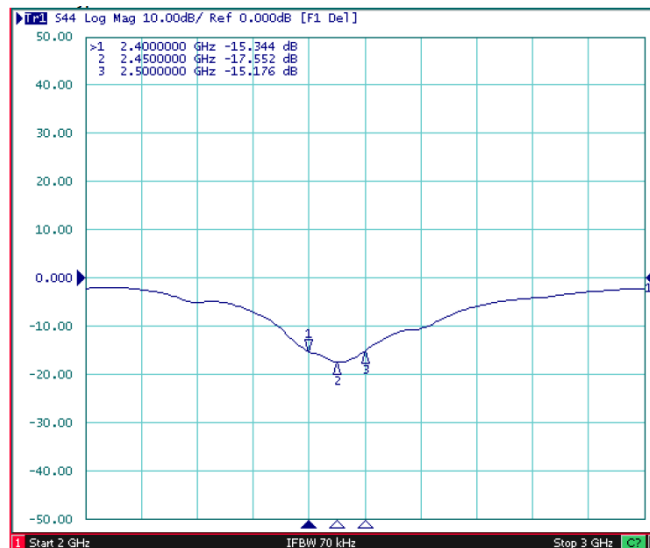
Operation Temperature	- 40°C ~ + 85°C
Storage Temperature	- 40°C ~ + 105°C

4, Antenna On Test Board



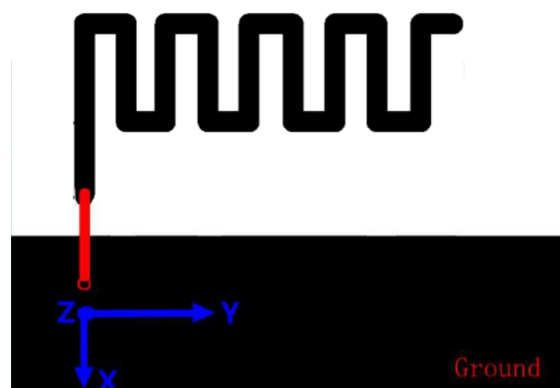
FR4 Thickness 0.8mm

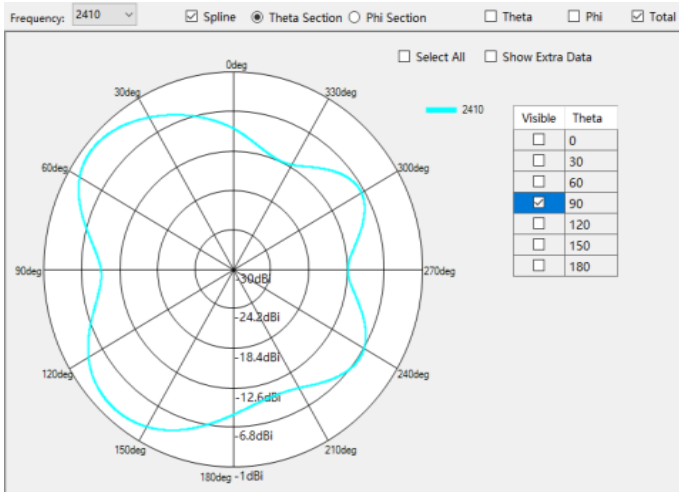
5, Return Loss



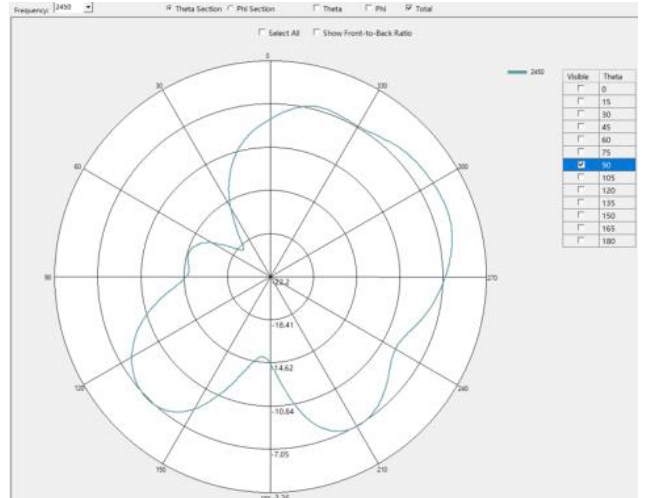
6, Radiation Pattern

Radiation Pattern and Gain were dependent on measurement board design. The specification of PCB antenna was measured based on the PCB size and installation position as shown in the below figure Test Board.

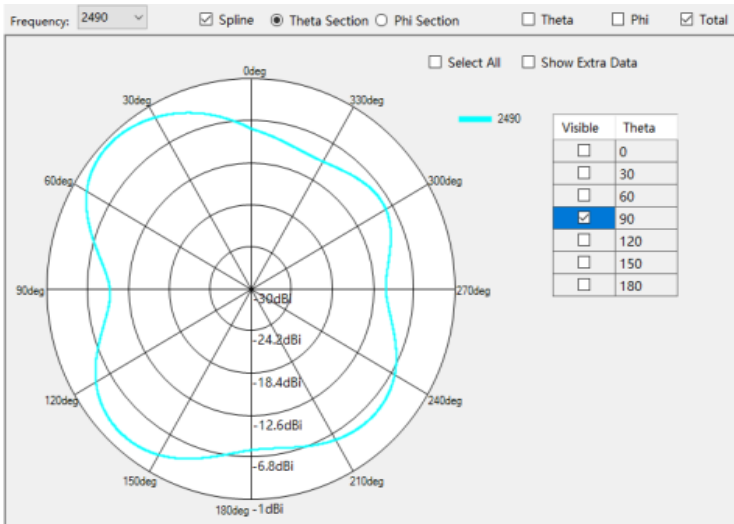




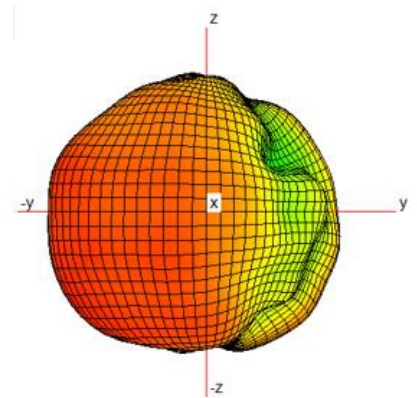
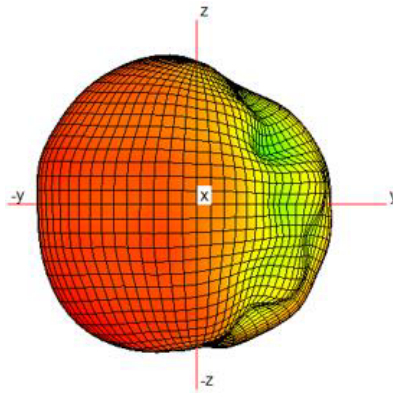
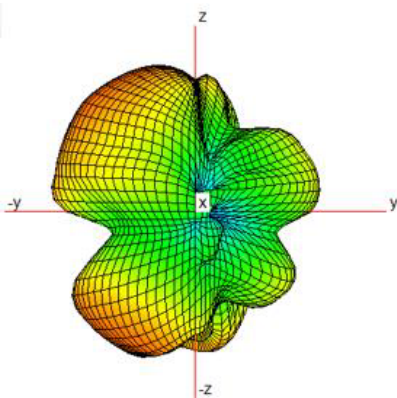
2410 MHz
Gain = -5.86dBi



2450 MHz
Gain= 3.26dBi



2490 MHz
Gain= -0.81dBi



Test Result:

Frequency VNA	Gain (dBi)	Efficiency %
2400MHz	-6.22	11.51
2410MHz	-5.86	13.14
2420MHz	-5.48	12.02
2430MHz	-4.68	12.62
2440MHz	-3.98	13.19
2450MHz	-3.26	15.17
2460MHz	-2.41	18.36
2470MHz	-1.69	21.39
2480MHz	-1.16	23.28
2490MHz	-0.81	24.93
2500MHz	-0.82	25.04